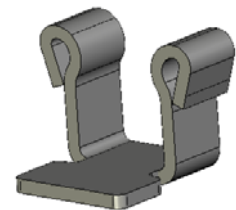
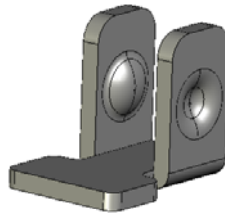
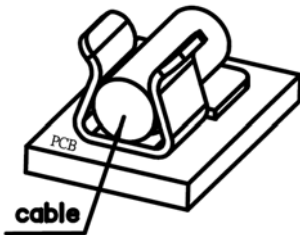
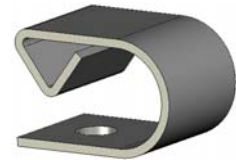
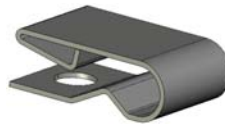
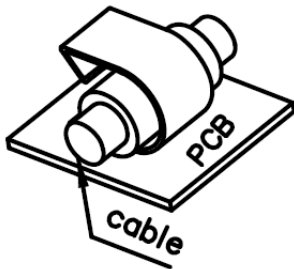




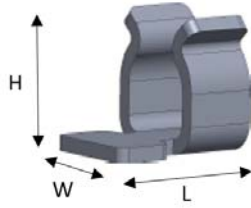
# SMT CABLE CLIP -

## SU/ SV SERIES

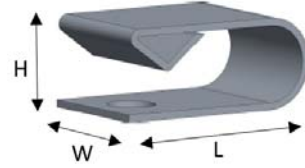
- General purpose cable holder
- Makes PCB neat and tidy
- Two opening directions: up and side



SV series



SU series



P/N	Plating	Material	L (mm)	W (mm)	H (mm)	Wire dia. (mm)
SV-05G	Gold	Stainless Steel	1.50	1.10	1.25	Ø0.51
SV-08A2M	Matte Tin	Stainless Steel	1.50	1.10	1.34	Ø0.64~0.81
SV-08A3Q1M	Matte Tin	Stainless Steel	2.00	1.10	1.08	Ø0.81
SV-08A6M	Matte Tin	Stainless Steel	4.40	1.75	1.25	Ø0.81
SV-11A3M	Matte Tin	Stainless Steel	1.60	2.00	1.52	Ø1.15
SV-12A1M	Matte Tin	Phosphorus Bronze	4.00	2.20	1.80	Ø1.37
SV-25M	Matte Tin	Stainless Steel	4.00	2.70	3.35	Ø2.59
SU-10A4M	Matte Tin	Stainless Steel	2.70	2.00	1.10	Ø0.51~0.76
SU-12A1G	Gold	Beryllium Copper	3.50	2.00	1.16	Ø0.81~1.02
SU-12A7M	Matte Tin	Copper Alloy	1.95	1.50	1.20	Ø0.81~0.95
SU-15S	Matte Tin	Beryllium Copper	3.50	2.00	1.50	Ø1.02
SU-17S	Matte Tin	Beryllium Copper	3.00	2.00	1.70	Ø1.27
SU-20S	Matte Tin	Beryllium Copper	3.00	2.00	2.00	Ø1.02~1.27
SU-20AS	Matte Tin	Beryllium Copper	4.00	2.00	2.00	Ø1.44
SU-27A1M	Matte Tin	Beryllium Copper	3.50	2.00	2.70	Ø2.05
SU-27AS	Matte Tin	Beryllium Copper	3.50	2.00	2.70	Ø1.2~2.0

service@emistop.com