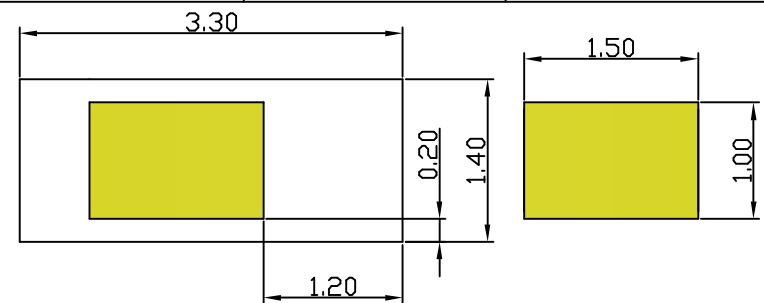


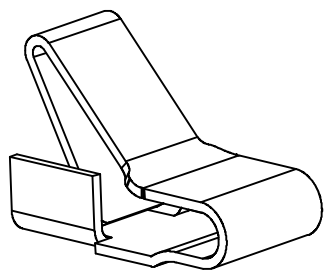
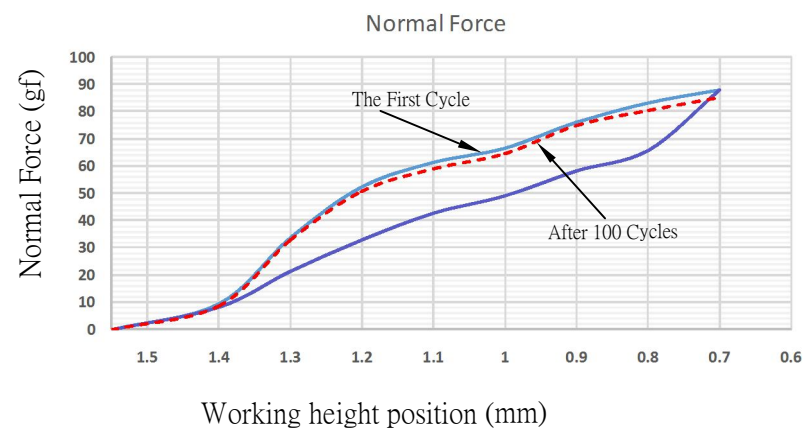
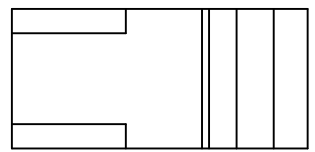
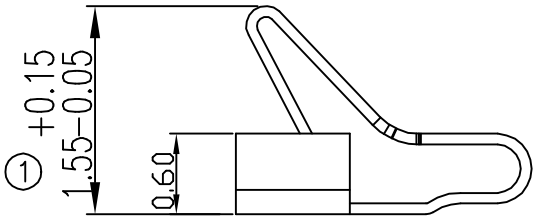
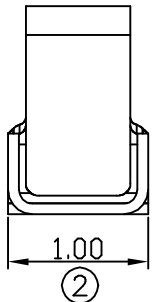
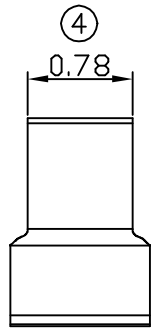
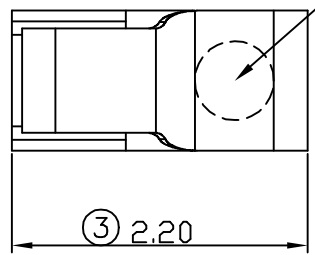
00 06/15-'17

A
B
C
D
E
F



RECOMMENDED SOLDERING PCB LAYOUT
TOLERANCE(.XX±0.05)

Place Area NOZZLE



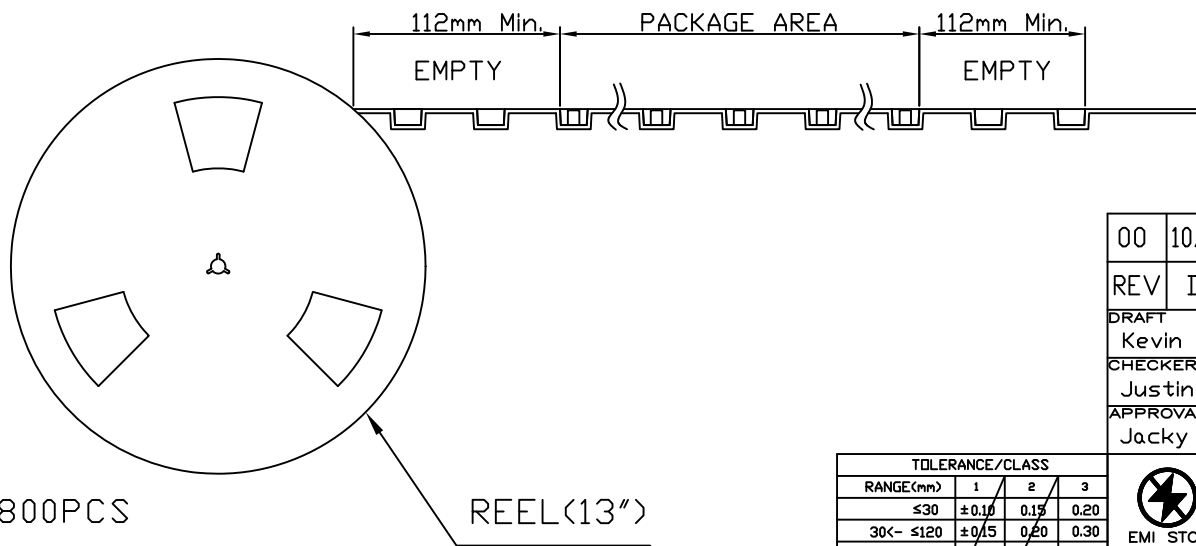
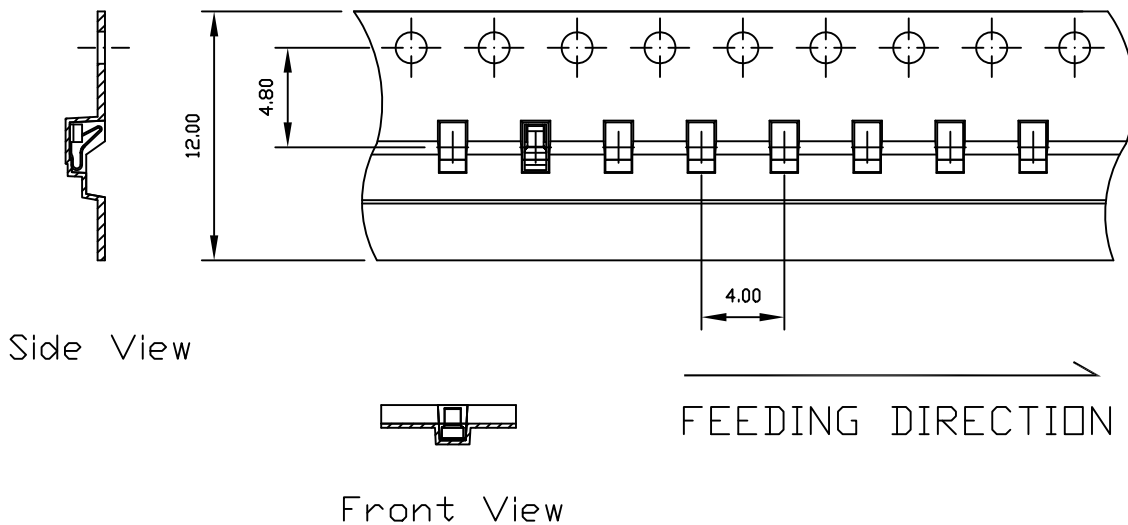
- Note:
- Material: Titanium copper Thickness 0.08mm
 - Electroplate:
Au >1u' on contact area
Gold Flash on solder area
Nickel underplating over all
 - Electrical Characteristics:
3-1 Current Voltage: 12V
3-2 Current Rate: 3A
3-3 Contact Resistance: Normal Compression < 30mΩ
 - Working Height of Application: 0.70~1.15 mm
 - Spring Force Tolerance is ±20gf
 - Operating Temperature: -20℃~+85℃

00	06/15-'17	Design creation						
REV	Date	Description						
DRAFT	Hardy Hsieh	DATE	06/15-'17	RoHS Compatible				
CHECKER	Justin Wu	DATE	06/15-'17					
APPROVAL	Jacky Lin	DATE	06/15-'17					
		SHEET	1-2	SCALE	Not to scale	UNIT	mm	

TOLERANCE/CLASS			
RANGE(mm)	1	2	3
≤30	±0.10	0.15	0.20
30<~≤120	±0.15	0.20	0.30
120<~≤300	±0.20	0.30	0.50
300<	±0.30	0.50	0.80
ANGLES	±2.5°		

EMI STOP CORP.
EMI STOP
EMISTOP QTT-15A2G CUS P/N

1 2 3 4 5 6 7 8



Package Information:
 1.Quantity Per Reel: 8800PCS
 2.REEL: 13"X 12 mm

00	10/14-19'	Design creation		
REV	Date	Description		
DRAFT	DATE	RoHS Compatible		
Kevin Chen	10/14-19'			
CHECKER	DATE			
Justin Wu	10/14-19'			
APPROVAL	DATE	SHEET	SCALE	UNIT
Jacky Lin	10/14-19'	2-2	Not to scale	mm

TOLERANCE/CLASS			
RANGE(mm)	1	2	3
≤30	±0.10	0.15	0.20
30<- ≤120	±0.15	0.20	0.30
120<- ≤300	±0.20	0.30	0.50
300<	±0.30	0.50	0.80
ANGLES	±2.5°		

EMI STOP CORP.

EMI STOP

EMISTOP QTT-15A2G

CUS P/N