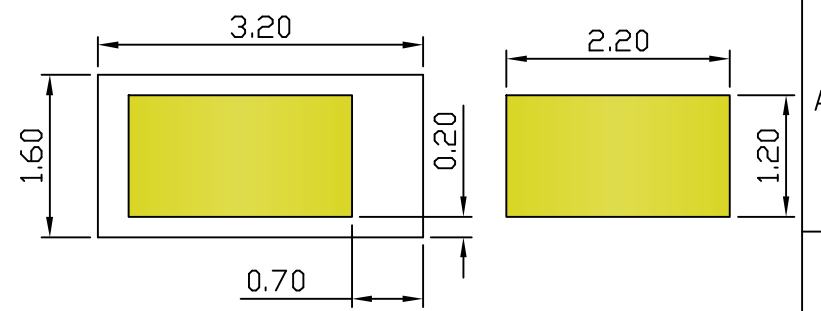
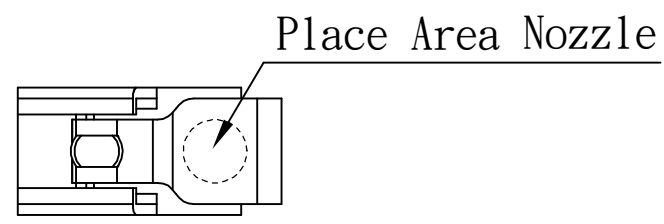
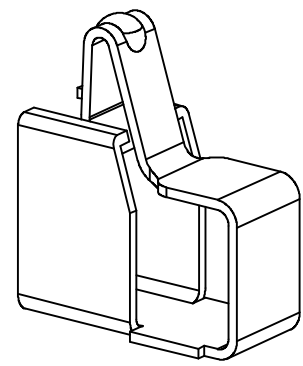
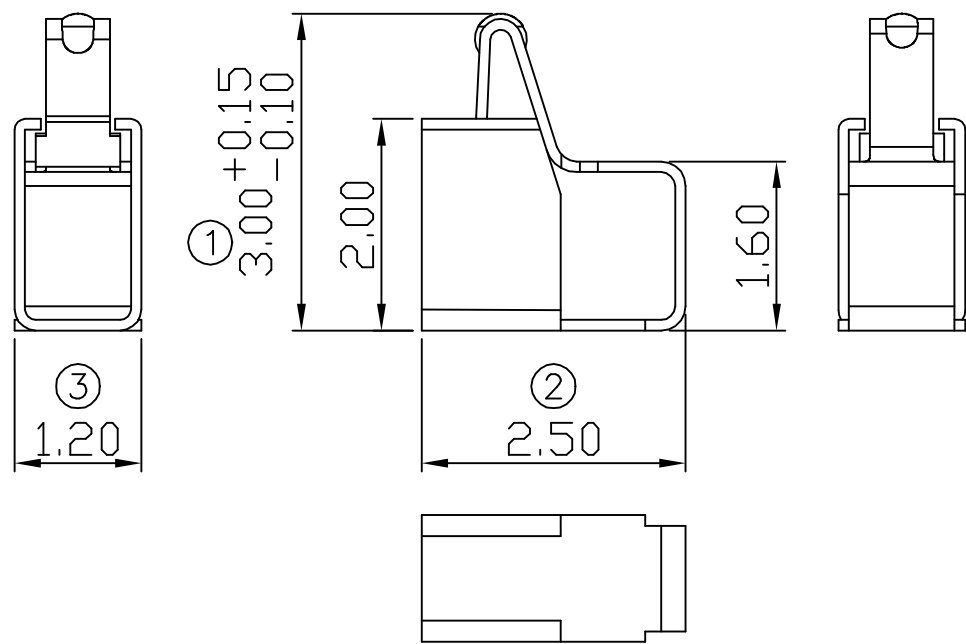
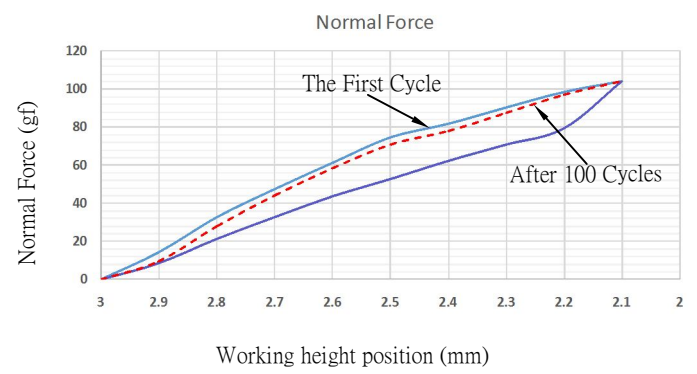


00 08/16-'19



RECOMMENDED SOLDERING PCB LAYOUT  
TOLERANCE(.XX±0.05)



- Note:
1. Material: Titanium copper Thickness 0.10mm
  2. Electroplate:  
Au >1u" on contact area  
Gold Flash on solder area  
Nickel underplating over all
  3. Electrical Characteristics:  
3-1 Current Voltage: 12V  
3-2 Current Rate: 3A  
3-3 Contact Resistance: Normal Compression < 30mΩ
  4. Working Height of Application: 2.10~2.60 mm
  5. Spring Force Tolerance is ±20gf
  6. Operating Temperature: -20℃~+85℃

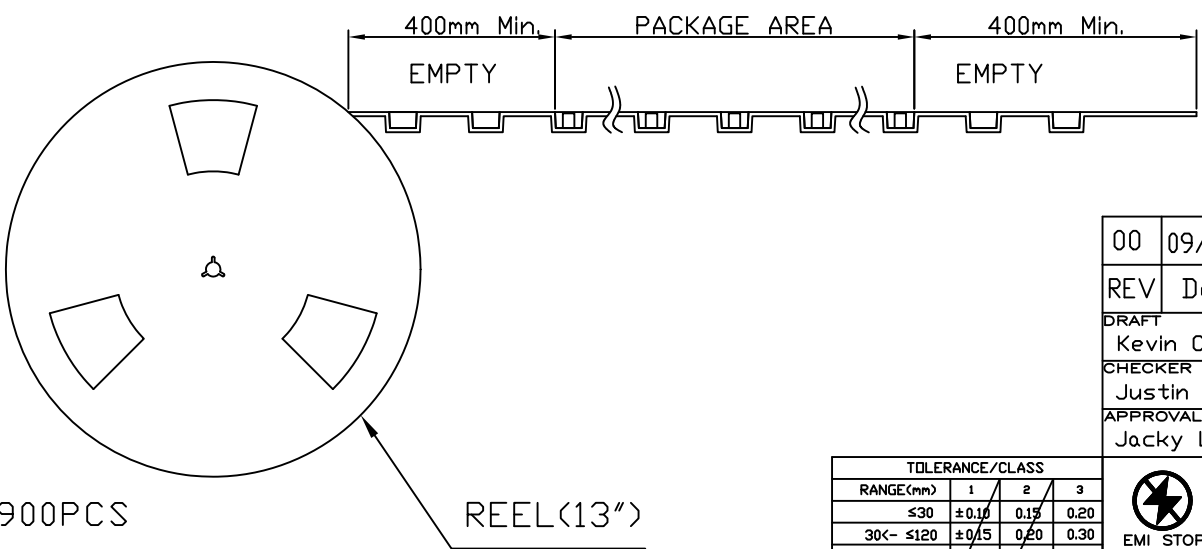
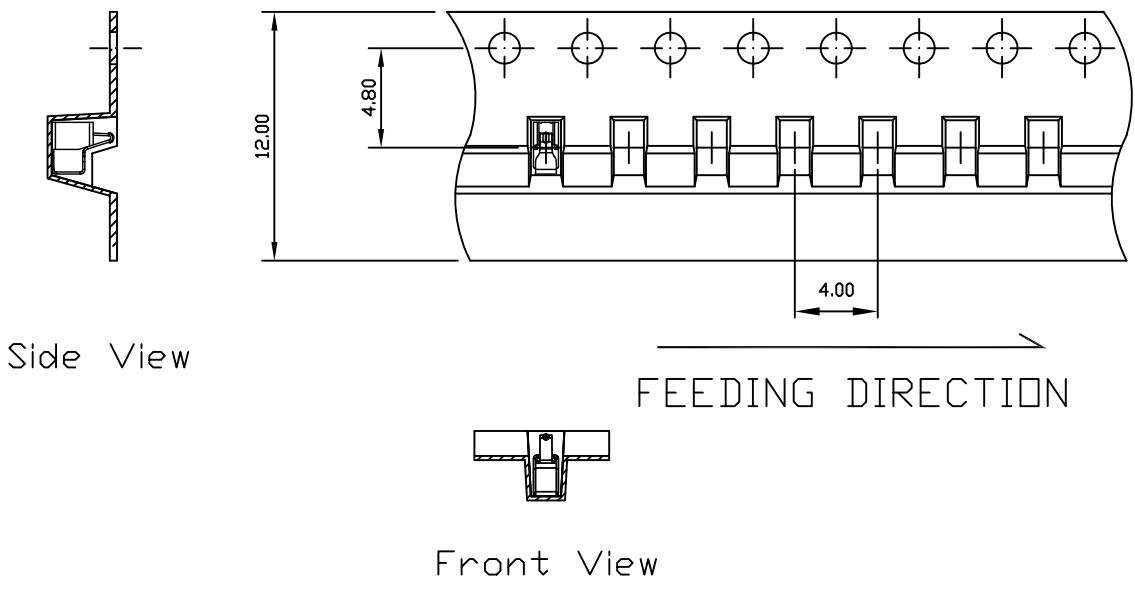
00	08/16-'19	Design creation								
REV	Date	Description								
DRAFT	Hardy Hsieh	DATE	08/16-'19	<b>RoHS Compatible</b>						
CHECKER	Justin Wu	DATE	08/16-'19							
APPROVAL	Timothy Chen	DATE	08/16-'19			SHEET	1-2	SCALE	Not to scale	UNIT

TOLERANCE/CLASS			
RANGE(mm)	1	2	3
≤30	±0.10	0.15	0.20
30<~≤120	±0.15	0.20	0.30
120<~≤300	±0.20	0.30	0.50
300<	±0.30	0.50	0.80
ANGLES	±2.5°		

**EMI STOP CORP.**

EMI STOP

EMISTOP	CUS P/N
QTT-30Q1G	



Package Information:  
 1.Quantity Per Reel: 4900PCS  
 2.REEL: 13"X 12 mm

00	09/11-19'	Design creation		
REV	Date	Description		
DRAFT	DATE	<b>RoHS Compatible</b>		
Kevin Chen	09/11-19'			
CHECKER	DATE			
Justin Wu	09/11-19'			
APPROVAL	DATE	SHEET	SCALE	UNIT
Jacky Lin	09/11-19'	2-2	Not to scale	mm

TOLERANCE/CLASS			
RANGE(mm)	1	2	3
≤30	±0.10	0.15	0.20
30<- ≤120	±0.15	0.20	0.30
120<- ≤300	±0.20	0.30	0.50
300<	±0.30	0.50	0.80
ANGLES	±2.5°		

**EMI STOP CORP.**

EMI STOP

EMISTOP QTT-30Q1G

CUS P/N