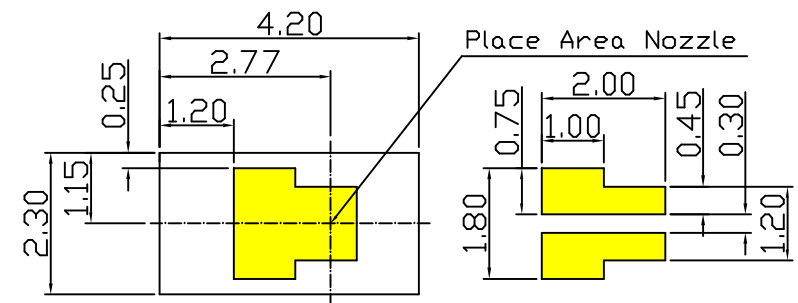
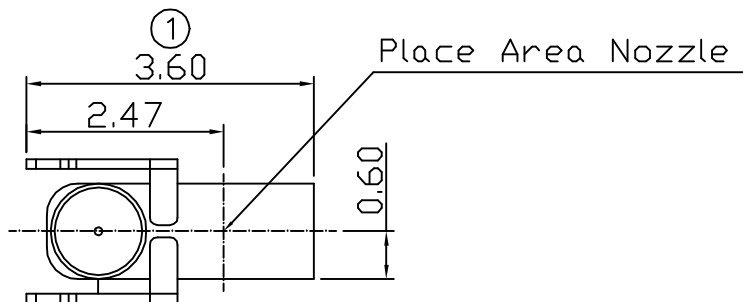
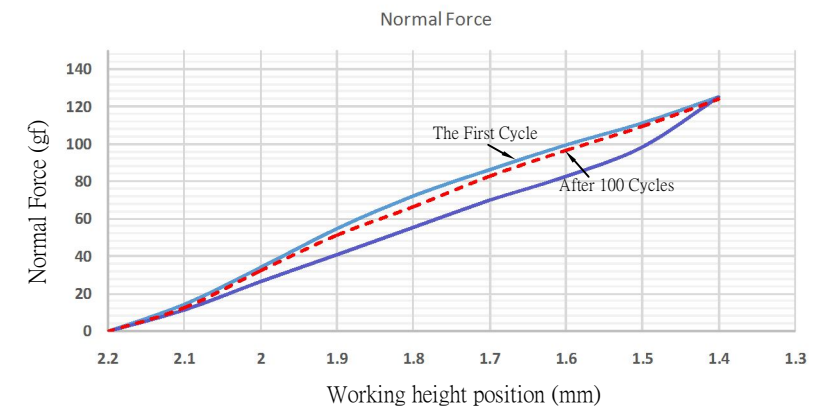
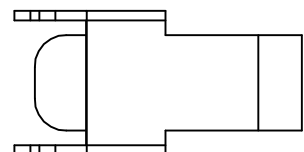
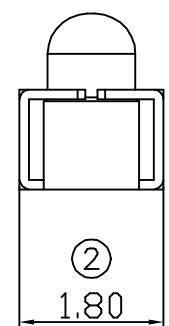
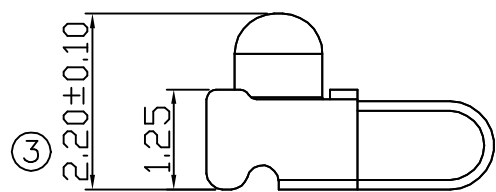
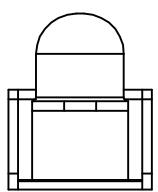


00 07/26-'17

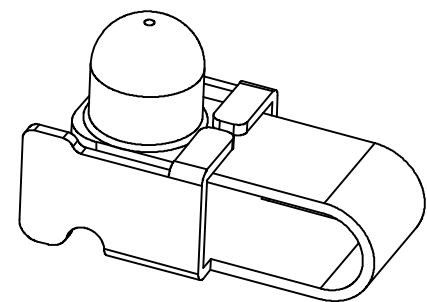


RECOMMENDED SOLDERING PCB LAYOUT

TOLERANCE(.XX±0.05)



- Note:
- Material: Phosphorus Bronze Thickness 0.12mm
  - Electroplate:  
Au >1u" on contact area  
Gold Flash on solder area  
Nickel underplating over all
  - Electrical Characteristics:  
3-1 Current Voltage: 12V  
3-2 Current Rate: 3A  
3-3 Contact Resistance: Normal Compression < 30mΩ
  - Working Height of Application: 1.4~1.8mm
  - Spring Force Tolerance is ±20gf
  - Operating Temperature: -20℃~+85℃



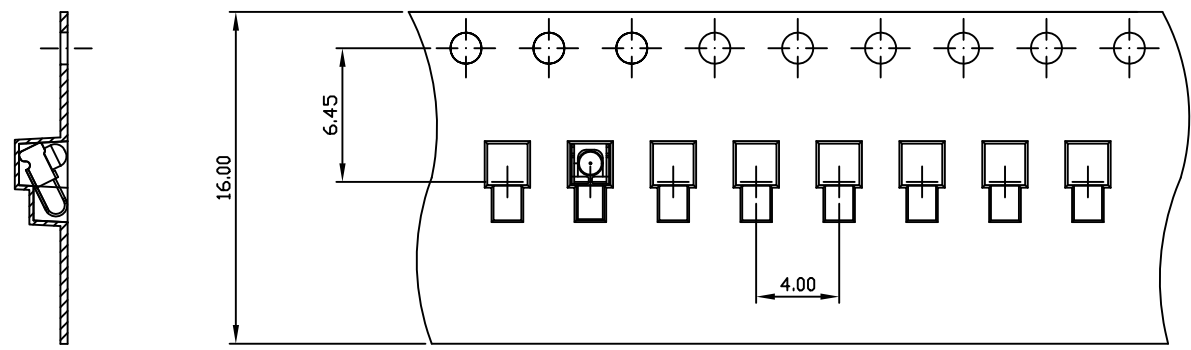
00	03/04-'13	Design creation	
REV	Date	Description	
DRAFT	DATE	<b>RoHS Compatible</b>	
Gabby Weng	03/04-'13		
CHECKER	DATE		
Jacky Lin	03/04-'13		
APPROVAL	DATE	SHEET	SCALE
Jacky Lin	03/04-'13	1-2	Not to scale
		UNIT	

TOLERANCE/CLASS			
RANGE(mm)	1	2	3
≤30	±0.10	0.15	0.20
30<- ≤120	±0.15	0.20	0.30
120<- ≤300	±0.20	0.30	0.50
300<	±0.30	0.50	0.80
ANGLES	±2.5°		

**EMI STOP CORP.**

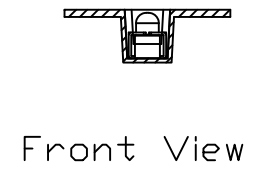
EMI STOP  
QQ-22Q1G

CUS P/N

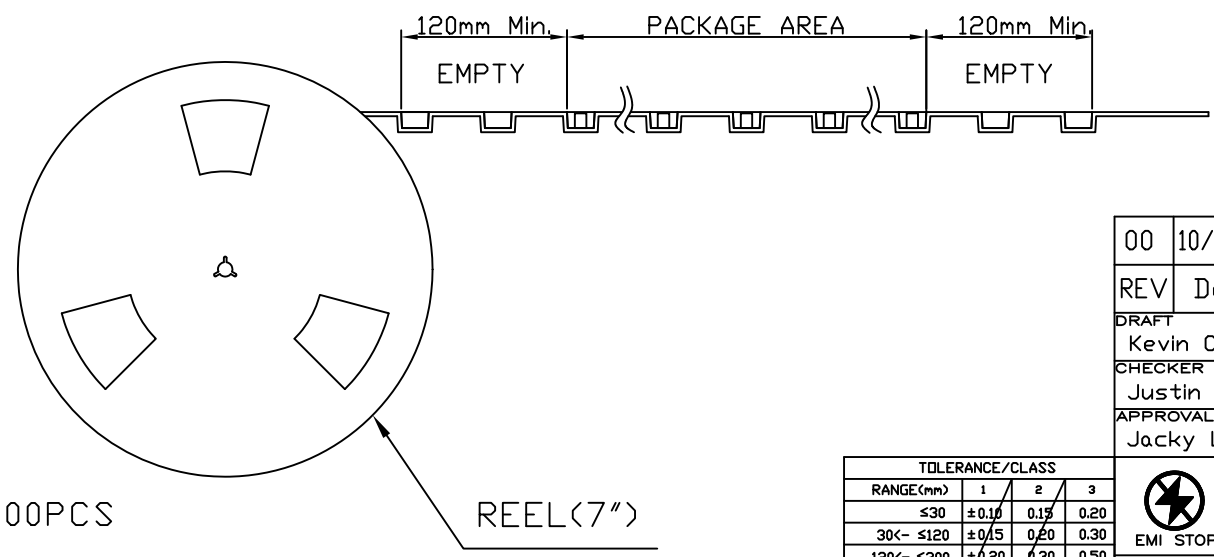


Side View

FEEDING DIRECTION




Front View



Package Information:  
 1.Quantity Per Reel: 1500PCS  
 2.REEL: 7"X 16 mm

00	10/09-19'	Design creation			
REV	Date	Description			
DRAFT	Kevin Chen	DATE	10/09-19'	<b>RoHS Compatible</b>	
CHECKER	Justin Wu	DATE	10/09-19'		
APPROVAL	Jacky Lin	DATE	10/09-19'	SHEET	2-2
		SCALE	Not to scale	UNIT	mm

TOLERANCE/CLASS			
RANGE(mm)	1	2	3
≤30	±0.10	0.15	0.20
30<- ≤120	±0.15	0.20	0.30
120<- ≤300	±0.20	0.30	0.50
300<	±0.30	0.50	0.80
ANGLES	±2.5°		


**EMI STOP CORP.**  
 EMI STOP  
 EMISTOP  
 QQ-22Q1G

CUS P/N