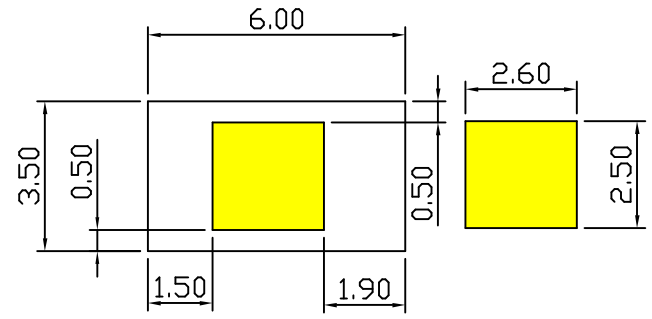
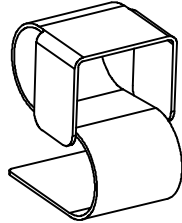
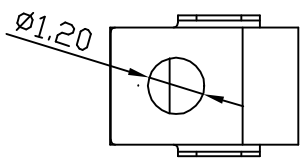
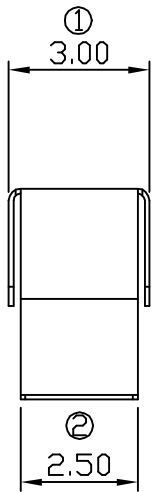
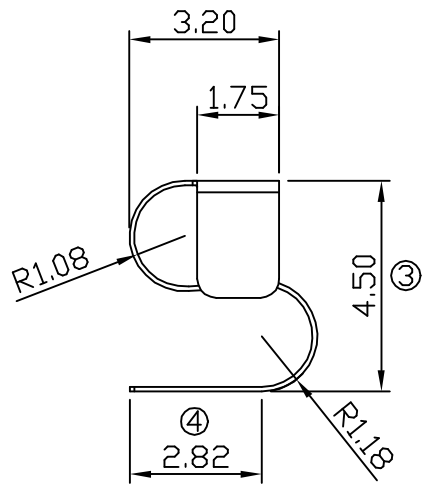
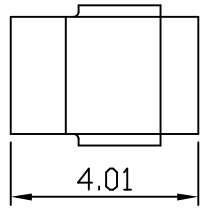
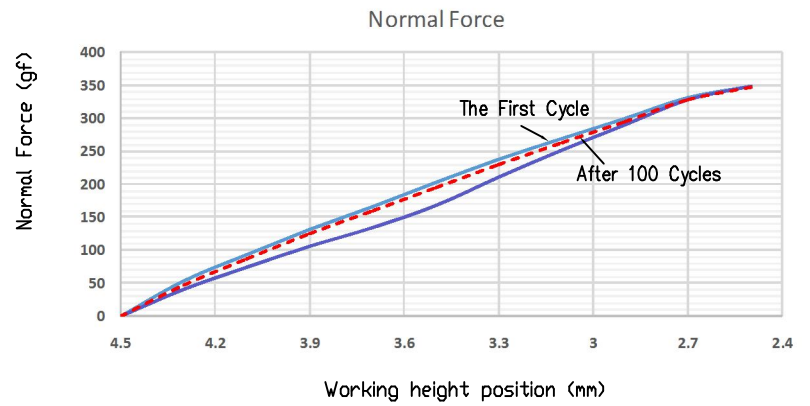


00 07/30-'18



RECOMMENDED SOLDERING PCB LAYOUT  
TOLERANCE(.XX±0.05)



- Note:
- Material: Beryllium Copper Thickness 0.10mm
  - Electroplate:
    - Gold Flash on contact area
    - Gold Flash on solder area
    - Nickel underplating over all
  - Electrical Characteristics:
    - 3-1 Current Voltage: 12V
    - 3-2 Current Rate: 3A
    - 3-3 Contact Resistance: Normal Compression < 30mΩ
  - Working Height of Application: 2.5~4.0 mm
  - Spring Force Tolerance is ±20gf
  - Operating Temperature: -20℃~+85℃

00	07/30-'18	Design creation			
REV	Date	Description			
DRAFT	Hardy Hsieh	DATE	07/30-'18	<b>RoHS Compatible</b>	
CHECKER	Justin Wu	DATE	07/30-'18		
APPROVAL	Jacky Lin	DATE	07/30-'18	SHEET	1-2
		SCALE	Not to scale	UNIT	mm

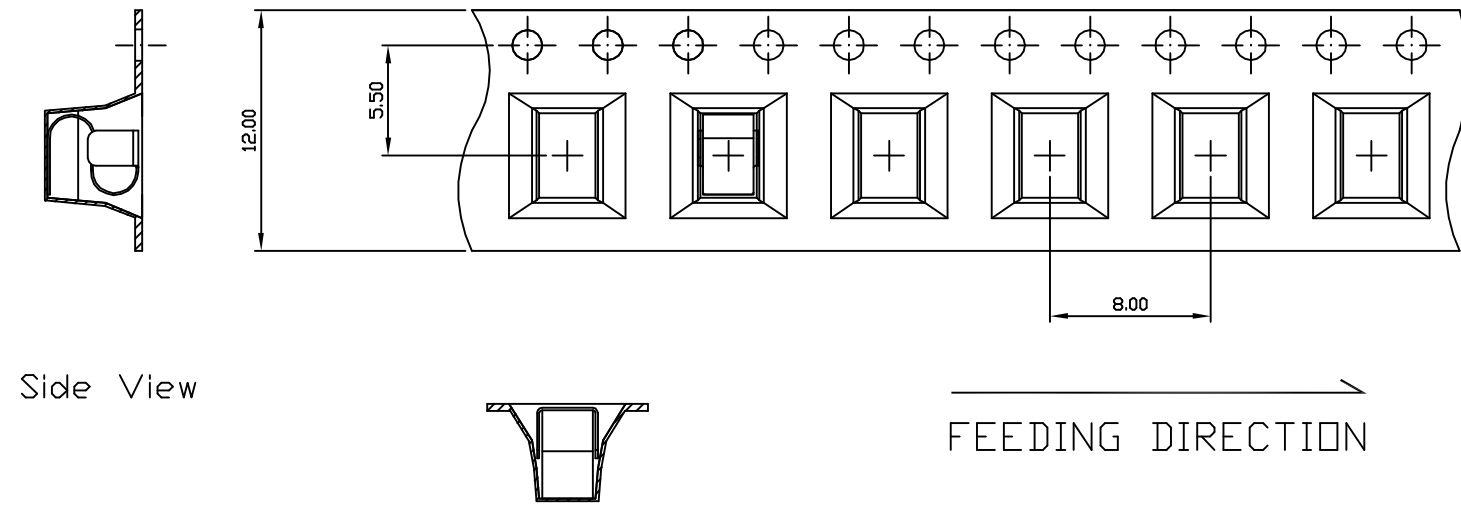
TOLERANCE/CLASS			
RANGE(mm)	1	2	3
≤30	±0.10	0.15	0.20
30<- ≤120	±0.15	0.20	0.30
120<- ≤300	±0.20	0.30	0.50
300<	±0.30	0.50	0.80
ANGLES	±2.5°		

**EMI STOP CORP.**  
EMI STOP

EMISTOP PS-45A2G

CUS P/N

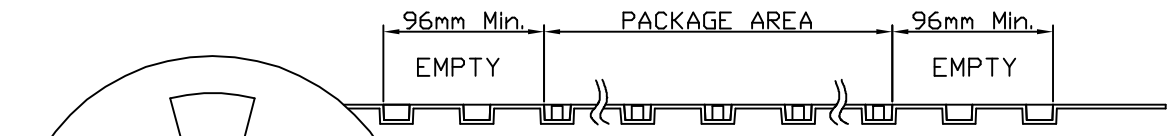
00 11/06-'19



Side View

Front View

FEEDING DIRECTION



Package Information:  
 1.Quantity Per Reel: 1500PCS  
 2.REEL: 13"X 12 mm

REEL(13")

TOLERANCE/CLASS			
RANGE(mm)	1	2	3
≤30	±0.10	0.15	0.20
30<- ≤120	±0.15	0.20	0.30
120<- ≤300	±0.20	0.30	0.50
300<	±0.30	0.50	0.80
ANGLES	±2.5°		

00	11/06-'19	Design creation		
REV	Date	Description		
DRAFT	Kevin Chen	DATE	11/06-'19	<b>RoHS Compatible</b>
CHECKER	Justin Wu	DATE	11/06-'19	
APPROVAL	Jacky Lin	DATE	11/06-'19	SHEET 2-2
		SCALE	Not to scale	UNIT mm

 **EMI STOP CORP.**

EMISTOP  
PS-45A2G

CUS P/N