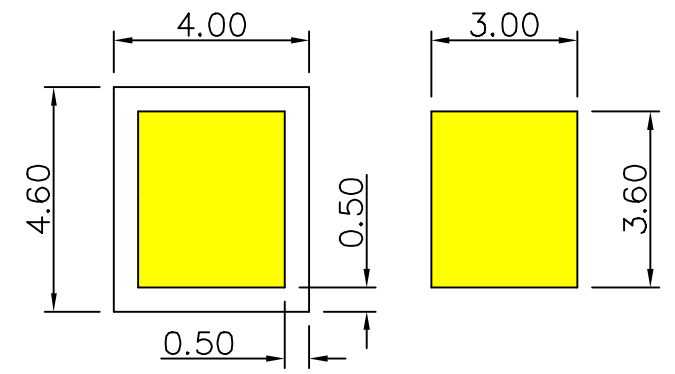
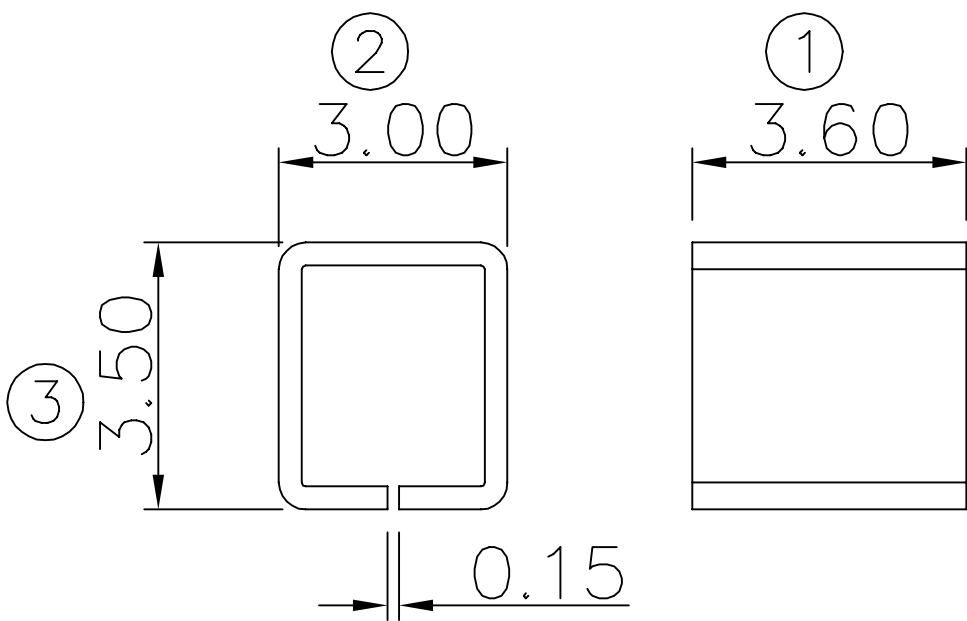
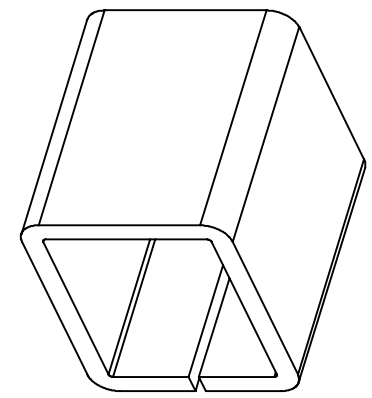
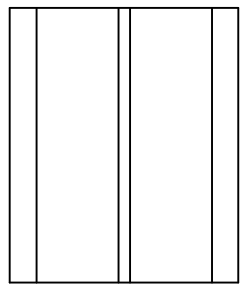


00 04-09



RECOMMENDED SOLDERING PCB LAYOUT
 TOLERANCE(.XX±0.05)



Note:

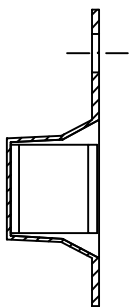
1. Material: Phosphorus bronze Thickness 0.30mm
2. Electroplate:
 - Gold Flash on contact area
 - Gold Flash on solder area
 - Nickel underplating over all
3. Electrical Characteristics:
 - 3-1 Current Voltage: 12V
 - 3-2 Current Rate: 3A
 - 3-3 Contact Resistance: Normal Compression <math>< 30\text{m}\Omega</math>
4. Operating Temperature: $-20^{\circ}\text{C} \sim +85^{\circ}\text{C}$

00	04/09-'09	Design creation	
REV	Date	Description	
DRAFT	DATE	RoHS Compatible	
Timmy Lai	04/09-'09		
CHECKER	DATE		
Benedict Liang	04/09-'09		
APPROVAL	DATE	SHEET	SCALE
Jacky Lin	04/09-'09	1-2	Not to scale
		UNIT	
		mm	

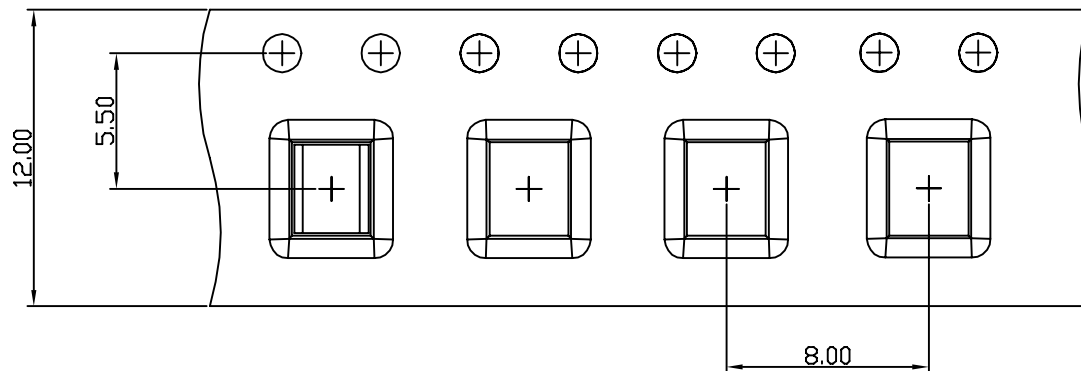
TOLERANCE/CLASS			
RANGE(mm)	1	2	3
≤30	±0.10	0.15	0.20
30< ≤120	±0.15	0.20	0.30
120< ≤300	±0.20	0.30	0.50
300<	±0.30	0.50	0.80
ANGLES	±2.5°		

EMI STOP CORP.
 EMI STOP

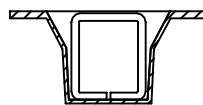
EMISTOP	CUS P/N
S0-35G	



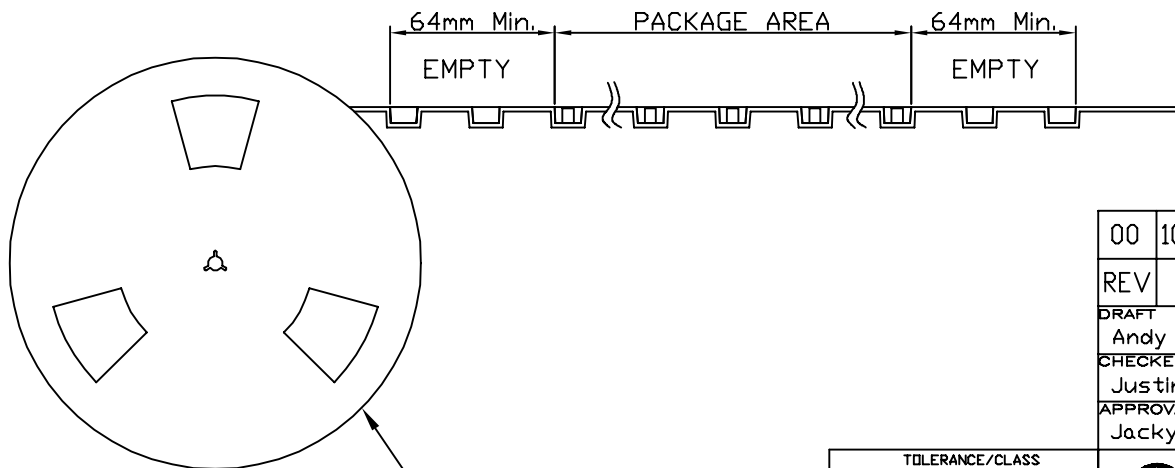
Side View



FEEDING DIRECTION



Front View



REEL(13")

Package Information:
 1.Quantity Per Reel: 2000PCS
 2.REEL: 13"X 12 mm

00	10/18-'19	Design creation		
REV	Date	Description		
DRAFT	Andy □	DATE	10/18-'19	RoHS Compatible
CHECKER	Justin Wu	DATE	10/18-'19	
APPROVAL	Jacky Lin	DATE	10/18-'19	SHEET 2-2
		SCALE	Not to scale	UNIT mm

TOLERANCE/CLASS			
RANGE(mm)	1	2	3
≤30	±0.10	0.15	0.20
30< - ≤120	±0.15	0.20	0.30
120< - ≤300	±0.20	0.30	0.50
300<	±0.30	0.50	0.80
ANGLES	±2.5°		

EMI STOP CORP.
 EMI STOP
 EMISTOP
 SQ-35G

CUS P/N