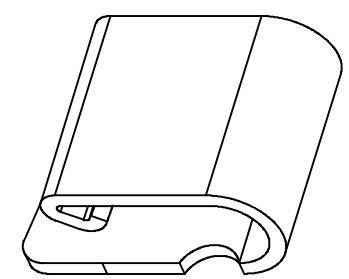
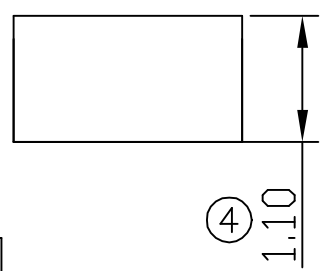
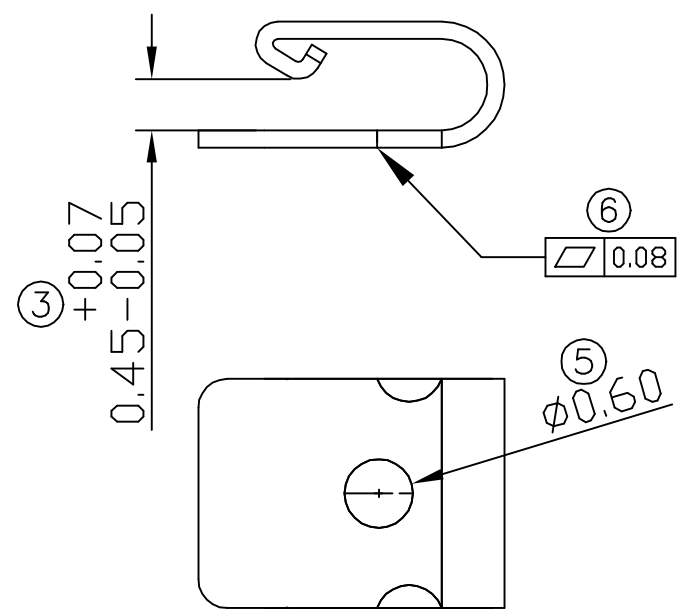


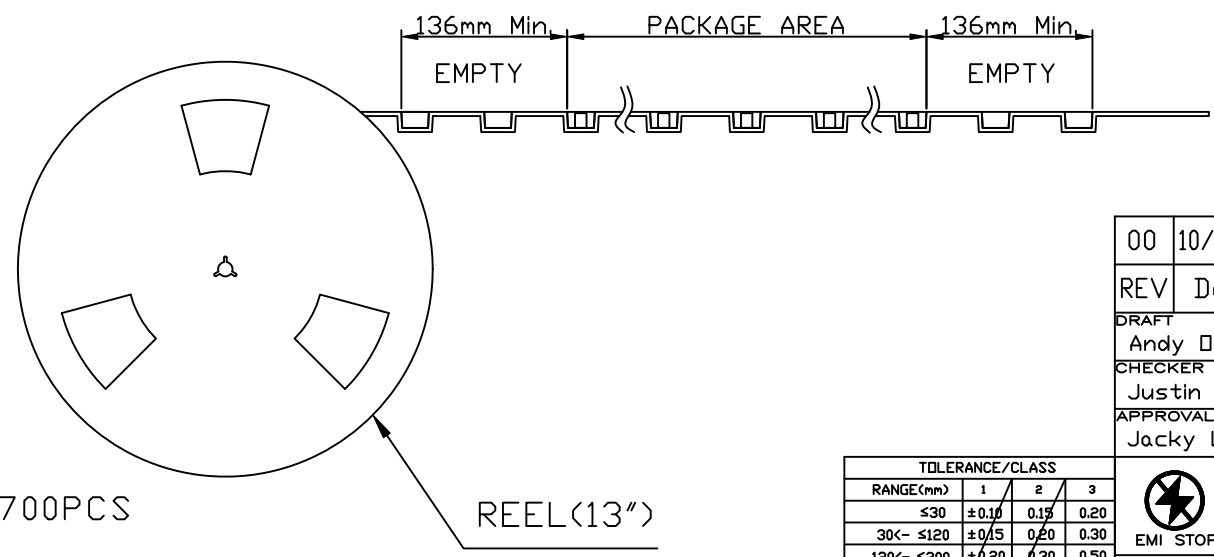
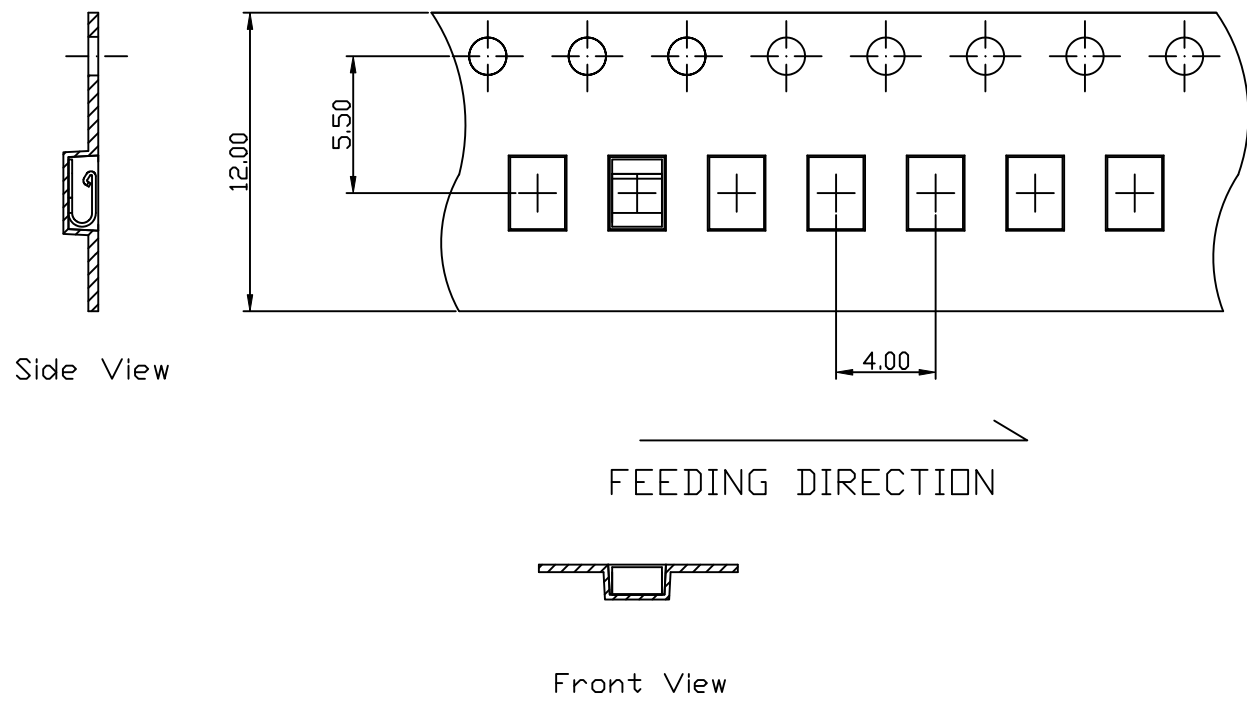
RECOMMENDED SOLDERING PCB LAYOUT
TOLERANCE(.XX±0.05)



Note:
 1. Material: Stainless steel Thickness 0.15mm
 2. Electroplate:
 Matte Sn over all
 Nickel underplating over all
 3. Operating Temperature: -20℃~+85℃
 4. Recommended conditions $\phi 0.51 \sim 0.76 \text{mm}$

TOLERANCE/CLASS			
RANGE(mm)	1	2	3
≤30	±0.10	0.15	0.20
30<- ≤120	±0.15	0.20	0.30
120<- ≤300	±0.20	0.30	0.50
300<	±0.30	0.50	0.80
ANGLES	±2.5°		

00	09/01-'16	Design creation			
REV	Date	Description			
DRAFT	Hardy Hsieh	DATE	09/01-'16		
CHECKER	Robin Liao	DATE	09/01-'16		
APPROVAL	Justin Wu	DATE	SHEET	SCALE	UNIT
		09/01-'16	1-2	Not to scale	mm
RoHS Compatible					
EMI STOP CORP.					
EMISTOP SU-10A4M			CUS P/N		



Package Information:
 1.Quantity Per Reel: 9700PCS
 2.REEL: 13"X 12 mm

00	10/15-'19	Design creation			
REV	Date	Description			
DRAFT	DATE	RoHS Compatible			
Andy □	10/15-'19				
CHECKER	DATE				
Justin Wu	10/15-'19				
APPROVAL	DATE	SHEET	SCALE	UNIT	
Jacky Lin	10/15-'19	2-2	Not to scale	mm	

TOLERANCE/CLASS			
RANGE(mm)	1	2	3
≤30	±0.10	0.15	0.20
30<- ≤120	±0.15	0.20	0.30
120<- ≤300	±0.20	0.30	0.50
300<	±0.30	0.50	0.80
ANGLES	±2.5°		

EMI STOP CORP.

EMI STOP

EMISTOP

SU-10A4M

CUS P/N