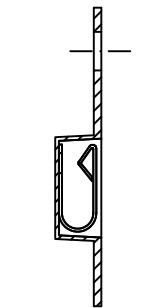


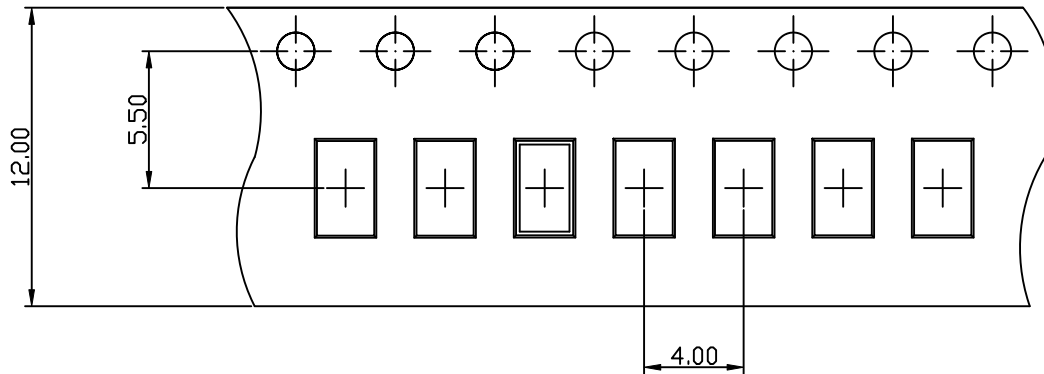
Note:
 1. Material: BeCu Thickness 0.12mm
 2. Electroplate:
 Matte Sn over all
 Nickel underplating over all
 3. Operating Temperature: -20℃~+85℃
 4. Recommended conditions $\phi 1.02\text{mm}$

TOLERANCE/CLASS			
RANGE(mm)	1	2	3
≤30	±0.10	0.15	0.20
30<- ≤120	±0.15	0.20	0.30
120<- ≤300	±0.20	0.30	0.50
300<	±0.30	0.50	0.80
ANGLES	±2.5°		

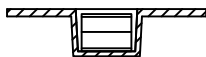
01	01/31-'07	Madyfy Layout Pattern								
00	01/14-'03	Design creation								
REV	Date	Description								
DRAFT	Dick Chang	DATE	01/14-'03	RoHS Compatible						
CHECKER	Jacky Lin	DATE	01/14-'03							
APPROVAL	Gary Chen	DATE	01/14-'03			SHEET	1-2	SCALE	Not to scale	UNIT
		EMI STOP CORP.								
EMISTOP		SU-15S		CUS P/N						



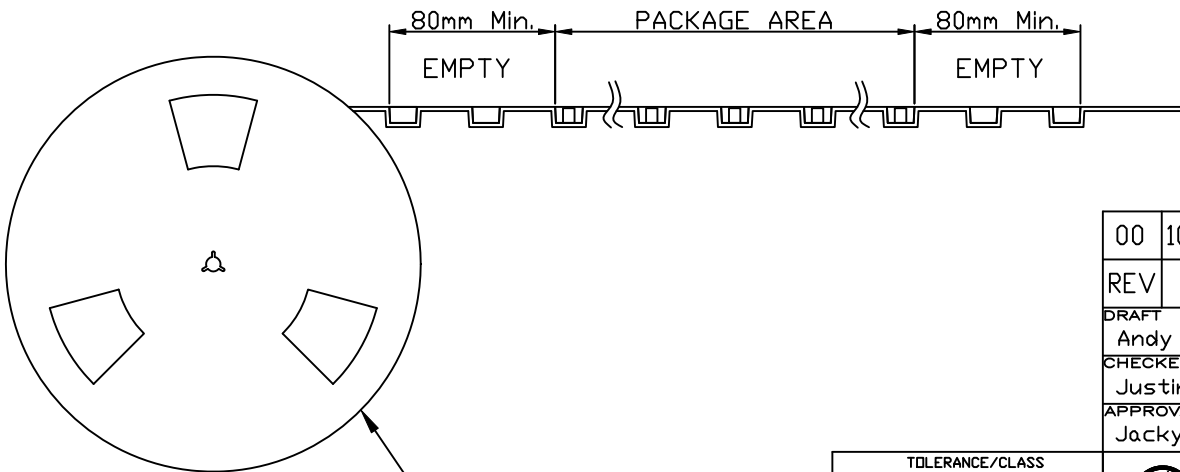
Side View



FEEDING DIRECTION



Front View



Package Information:
 1.Quantity Per Reel: 8000PCS
 2.REEL: 13"X 12 mm

REEL(13")

TOLERANCE/CLASS			
RANGE(mm)	1	2	3
≤30	±0.10	0.15	0.20
30<- ≤120	±0.15	0.20	0.30
120<- ≤300	±0.20	0.30	0.50
300<	±0.30	0.50	0.80
ANGLES	±2.5°		

00	10/14-'19	Design creation			
REV	Date	Description			
DRAFT	DATE	RoHS Compatible			
Andy □	10/14-'19				
CHECKER	DATE				
Justin Wu	10/14-'19				
APPROVAL	DATE	SHEET	SCALE	UNIT	
Jacky Lin	10/14-'19	2-2	Not to scale	mm	



EMI STOP

EMI STOP CORP.

EMISTOP
SU-15S

CUS P/N