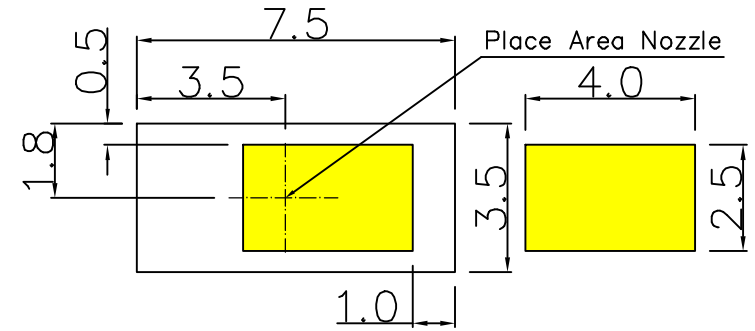
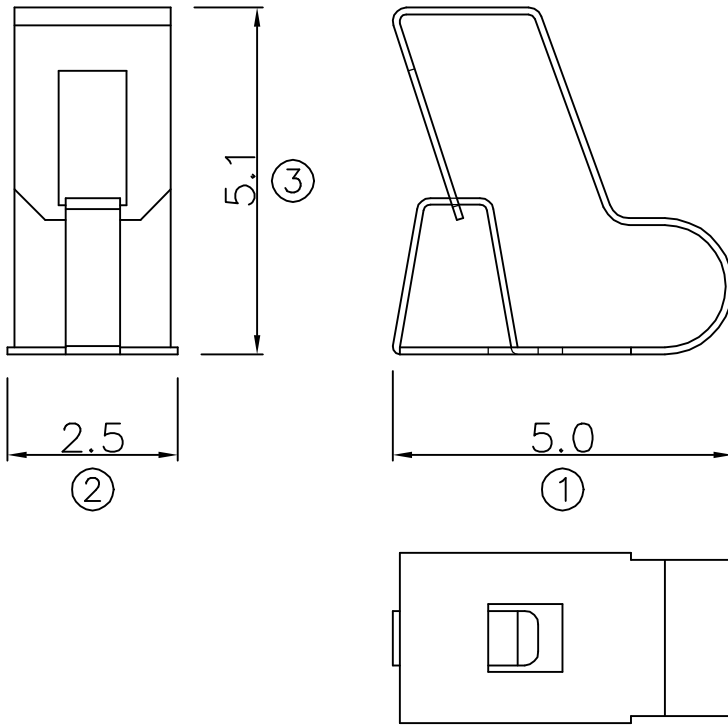
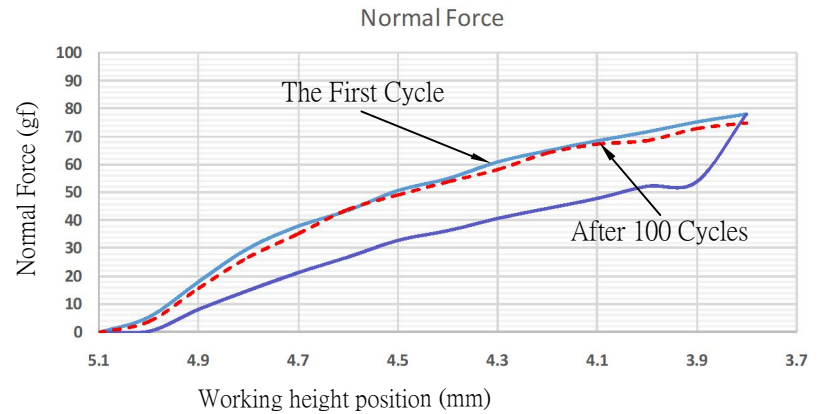


0012/26-'17



RECOMMENDED SOLDERING PCB LAYOUT

TOLERANCE(.XX±0.05)



- Note:
1. Material: Copper Alloy Thickness 0.10mm
 2. Electroplate:
Gold Flash on contact area
Gold Flash on solder area
Nickel underplating over all
 3. Electrical Characteristics:
3-1 Current Voltage: 12V
3-2 Current Rate: 3A
3-3 Contact Resistance: Normal Compression <math>< 30\text{m}\Omega</math>
 4. Working Height of Application: 3.80 ~ 4.70mm
 5. Spring Force Tolerance is $\pm 20\text{gf}$
 6. Operating Temperature: $-20^\circ\text{C} \sim +85^\circ\text{C}$

00	12/26-'17	Design creation								
REV	Date	Description								
DRAFT	Hardy Hsieh	DATE	12/26-'17	RoHS Compatible						
CHECKER	Justin Wu	DATE	12/26-'17							
APPROVAL	Jacky Lin	DATE	12/26-'17			SHEET	1-2	SCALE	Not to scale	UNIT

TOLERANCE/CLASS			
RANGE(mm)	1	2	3
≤30	±0.10	0.15	0.20
30< ≤120	±0.15	0.20	0.30
120< ≤300	±0.20	0.30	0.50
300<	±0.30	0.50	0.80
ANGLES	±2.5°		

EMI STOP CORP.
EMI STOP
EMISTOP SQ-51Q2G CUS P/N