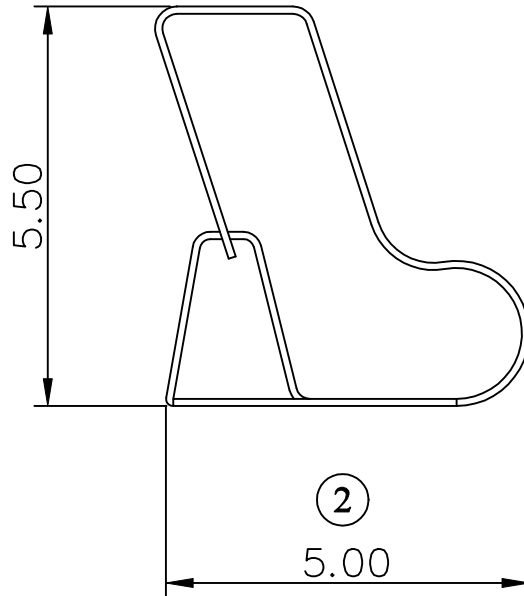


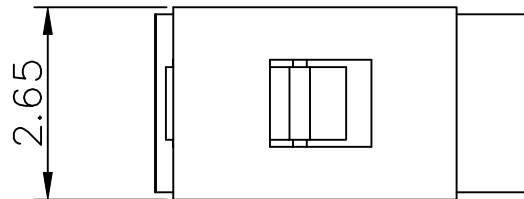
3



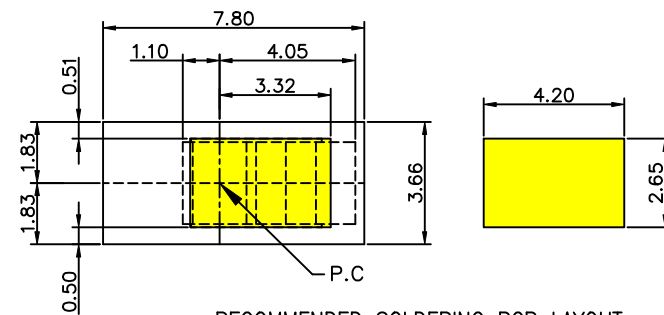
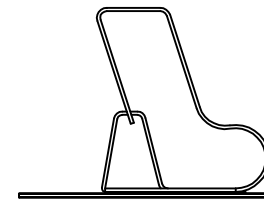
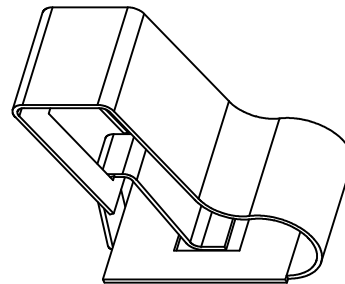
2

5.00

1

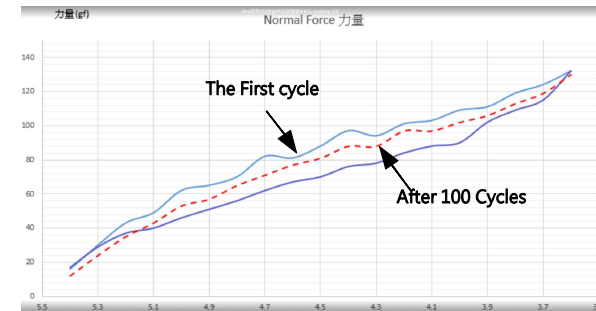


2.65



RECOMMENDED SOLDERING PCB LAYOUT
TOLERANCE(.XX±0.05)

Normal Force(gf)



Working height position(mm)

Note:

1. Material: Titanium Copper Thickness 0.10 mm
2. Electroplate: Nickel underplating over all, Gold Flash over all.
3. Electrical Characteristics:
 - a. Current Voltage: 12V
 - b. Current Rate: 3A
 - c. Contact Resistance; Normal Compression <30mΩ
4. Working Height of Application: 3.6 ~ 4.4mm
5. Spring Force Tolerance is ±20gf
6. Operating Temperature: -20°C ~ +85°C



TOLERANCE/CLASS			
RANGE(mm)	A	B	C
≤30	±0.10	0.15	0.20
30 < ~ ≤120	±0.15	0.20	0.30
120 < ~ ≤300	±0.20	0.30	0.50
300 <	±0.30	0.50	0.80
ANGLES	±2.5°		

00	2022-09-20	Design creation			
DRAFT	DATE	RoHS Compatible			
Young Chen	2023-01-10				
CHECKER	DATE	SHEET	SCALE	UNIT	
Justin Wu	2023-01-11	1-2	Not to scale	mm	
APPROVAL	DATE				
Timothy Chen	2023-01-11				



EMI STOP

EMI STOP CORP.

EMISTOP P/N
SQ-55Q2G

CUS P/N