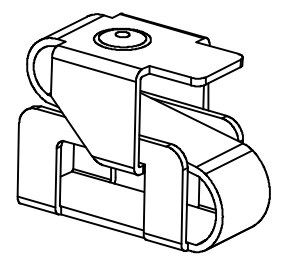
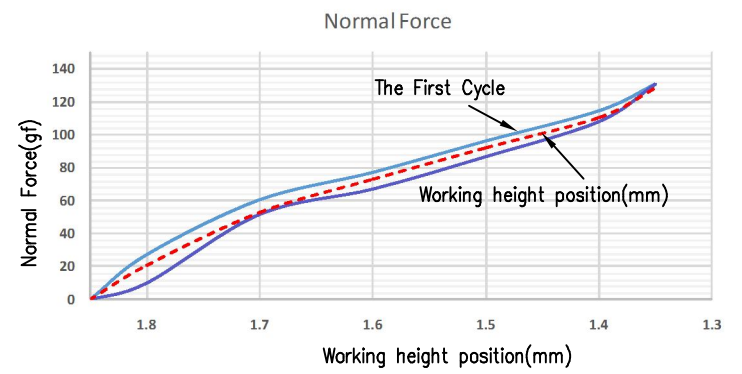


RECOMMENDED SOLDERING PCB LAYOUT
TOLERANCE(.XX±0.05)



- Note:
- Material: Copper Alloy Thickness 0.08mm
 - Electroplate:
Gold Flash on contact area
Gold Flash on solder area
Nickel underplating over all
 - Electrical Characteristics:
3-1 Current Voltage: 12V
3-2 Current Rate: 3A
3-3 Contact Resistance: Normal Compression < 30m Ω
 - Working Height of Application: 1.35~1.55mm
 - Spring Force Tolerance is ±20gf
 - Operating Temperature: -20℃~+85℃

TOLERANCE/CLASS			
RANGE(mm)	1	2	3
≤30	±0.10	0.15	0.20
30< ≤120	±0.15	0.20	0.30
120< ≤300	±0.20	0.30	0.50
300<	±0.30	0.50	0.80
ANGLES	±2.5°		

00	06/19-'12	Design creation			
REV	Date	Description			
DRAFT	Hardy Hsieh	DATE	06/19-'12	RoHS Compatible	
CHECKER	Gabby Weng	DATE	06/19-'12		
APPROVAL	Jacky Lin	DATE	06/19-'12	SHEET	1-2
		SCALE	Not to scale	UNIT	mm
EMI STOP CORP.					
EMISTOP PS-18Q1G			CUS P/N		