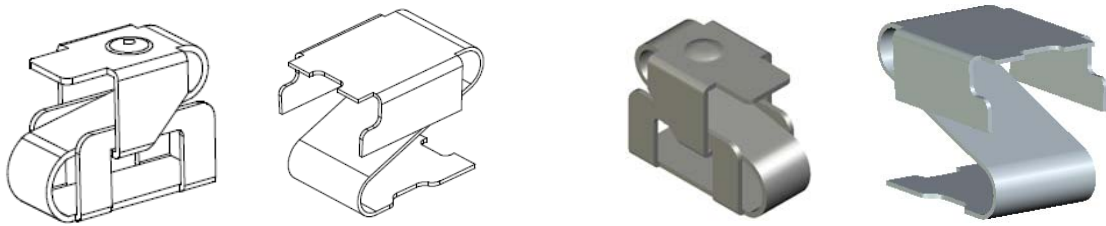




EMI SPRING - PS SERIES

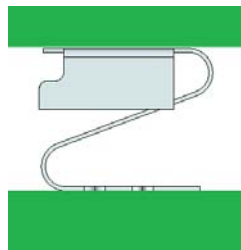
- Strong body and long life
- Anti deformation
- Anti overstressing



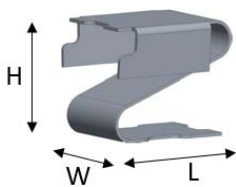
Grounding / EMI / Signal Solution

Applications

- Signal Transmission
- Grounding Contact
- Power Transmission



- ← Antenna/PCB
- ← PS Spring
- ← PCB



P/N	Plating	Material	L (mm)	W (mm)	H (mm)	Working Height (mm)
PS-18Q1G	Gold	Copper Alloy	2.40	1.20	1.85	1.35 ~ 1.55
PS-25A1Q1G	Gold	Copper Alloy	3.40	2.40	2.50	1.60 ~ 2.10
PS-35A1Q1G	Gold	Titanium Copper	3.90	3.18	3.50	1.60 ~ 3.20
PS-45A2Q1G	Gold	Titanium Copper	4.01	3.10	4.50	2.50 ~ 4.00

< contact us > +886-2-8911-3450 | service@emistop.com

