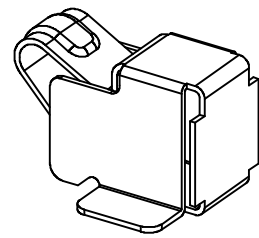


RECOMMENDED SOLDERING PCB LAYOUT
TOLERANCE(.XX±0.05)



Note:
 1. Material: Copper Alloy Thickness 0.08mm
 2. Electroplate:
 Au >1U" on contact area
 Au >1u" on solder area
 Nickel underplating over all
 3. Electrical Characteristics:
 3-1 Current Voltage: 12V
 3-2 Current Rate: 3A
 3-3 Contact Resistance: Normal Compression <30mΩ
 4. Working Range of Application: 0.30~0.50 mm
 5. Spring Force Tolerance is ±20gf
 6. Operating Temperature: -20°C~+85°C

00	05/26-'16	Design creation		
REV	Date	Description		
DRAFT	DATE	RoHS Compatible		
Danny Liao	05/26-'16			
CHECKER	DATE			
Justin Wu	05/26-'16			
APPROVAL	DATE	SHEET	SCALE	UNIT
Jacky Lin	05/26-'16	1-2	Not to scale	mm

TOLERANCE/CLASS			
RANGE(mm)	1	2	3
≤30	±0.10	0.15	0.20
30< - ≤120	±0.15	0.20	0.30
120< - ≤300	±0.20	0.30	0.50
300<	±0.30	0.50	0.80
ANGLES	±2.5°		

EMI STOP CORP.
EMI STOP

EMISTOP JC-302619G CUS P/N