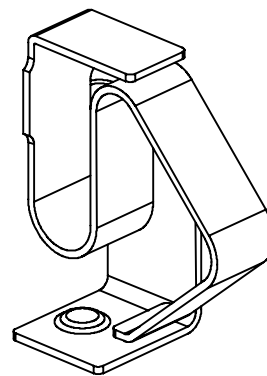


RECOMMENDED SOLDERING PCB LAYOUT

TOLERANCE(.XX±0.05)



- Note:
- Material: Copper Alloy Thickness 0.12mm
 - Electroplate:
 - Gold Flash on contact area
 - Gold Flash on solder area
 - Nickel underplating over all
 - Electrical Characteristics:
 - 3-1 Current Voltage: 12V
 - 3-2 Current Rate: 3A
 - 3-3 Contact Resistance: Normal Compression < 30mΩ
 - Working Range of Application: 0.50~1.00 mm
 - Spring Force Tolerance is ±20gf
 - Operating Temperature: -20℃~+85℃

00	05/25-'15	Design creation	
REV	Date	Description	
DRAFT	DATE	RoHS Compatible	
Hardy Hsieh	05/25-'15		
CHECKER	DATE		
Justin Wu	05/25-'15		
APPROVAL	DATE	SHEET	SCALE
Jacky Lin	05/25-'15	1-2	Not to scale
		UNIT	☉
		mm	

TOLERANCE/CLASS			
RANGE(mm)	1	2	3
≤30	±0.10	0.15	0.20
30< - ≤120	±0.15	0.20	0.30
120< - ≤300	±0.20	0.30	0.50
300<	±0.30	0.50	0.80
ANGLES	±2.5°		

EMI STOP CORP.
 EMI STOP

EMISTOP JC-394722Q1G CUS P/N