

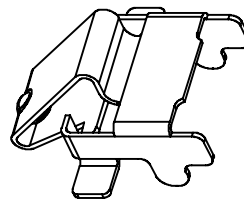
RECOMMENDED SOLDERING PCB LAYOUT

TOLERANCE(.XX±0.05)



Note:

1. Material: Stainless Steel Thickness 0.08mm
2. Electroplate:
 Au >1u" on contact area
 Au >1u" on solder area
 Nickel underplating over all
3. Electrical Characteristics:
 3-1 Current Voltage: 12V
 3-2 Current Rate: 3A
 3-3 Contact Resistance: Normal Compression < 50mΩ
4. Working Range of Application: 0.50~0.70 mm
5. Spring Force Tolerance is ±20gf
6. Operating Temperature: -20°C ~ +85°C



00	09/13-'17	Design creation	
REV	Date	Description	
DRAFT	DATE	RoHS Compatible	
Hardy Hsieh	09/13-'17		
CHECKER	DATE		
Justin Wu	09/13-'17		
APPROVAL	DATE	SHEET	SCALE
Jacky Lin	09/13-'17	1-2	Not to scale
		UNIT	mm

TOLERANCE/CLASS			
RANGE(mm)	1	2	3
≤30	±0.10	0.15	0.20
30 < ≤120	±0.15	0.20	0.30
120 < ≤300	±0.20	0.30	0.50
300 <	±0.30	0.50	0.80
ANGLES	±2.5'		

EMI STOP CORP.
 EMI STOP
 EMISTOP JC-323620G

CUS P/N