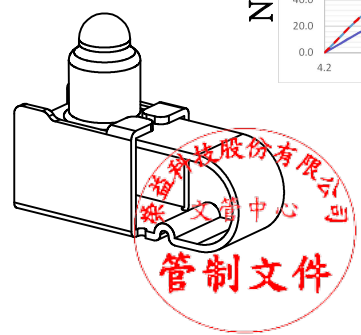
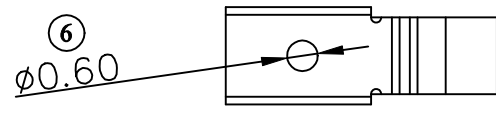
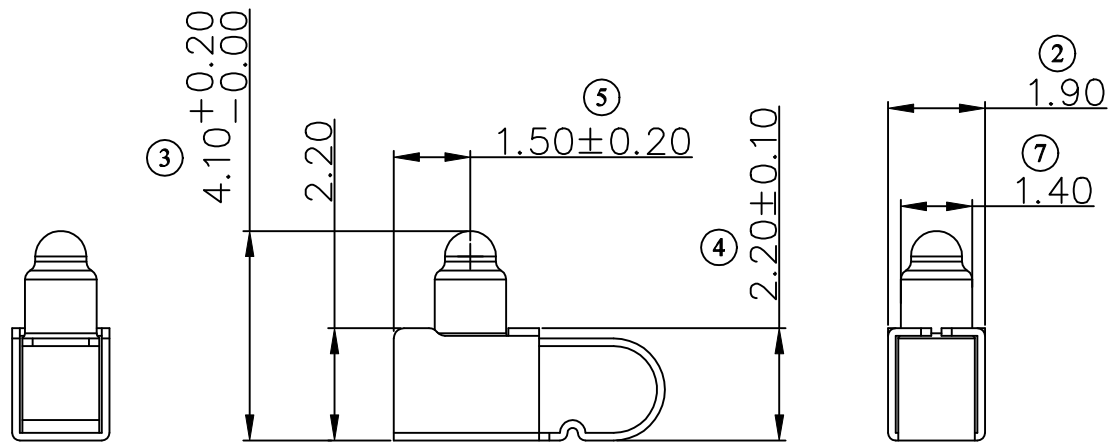
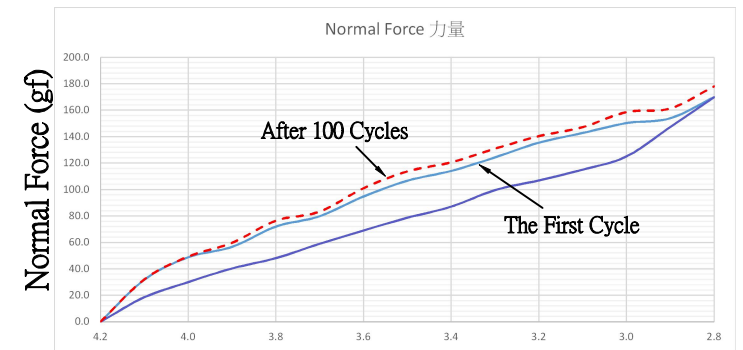


Top View
RECOMMENDED SOLDERING PCB LAYOUT

TOLERANCE(.XX±0.05)



Note:

1. Material: Phosphor Bronze Thickness 0.15 mm
2. Electroplate: Nickel underplating over all Au>1u" on solder area Au>1u" on contact area
3. Electrical Characteristics:
 - a. Current Voltage: 12V
 - b. Current Rate: 3A
 - c. Contact Resistance; Normal Compression <30mΩ
4. Working Height of Application: 2.8mm~3.6mm
5. Spring Force Tolerance is ±20gf
6. Operating Temperature: -20°C~+85°C

00	2022-06-28	Design Creation			
DRAFT	DATE	RoHS Compatible			
Lydia Tsai	2022-12-08				
CHECKER	DATE				
Justin Wu	2022-12-08	SHEET	SCALE	UNIT	
APPROVAL	DATE	1-2	Not to scale	mm	
Timothy Chen	2022-12-09				

TOLERANCE/CLASS			
RANGE(mm)	A	B	C
≤30	±0.10	0.15	0.20
30< ~ ≤120	±0.15	0.20	0.30
120< ~ ≤300	±0.20	0.30	0.50
300<	±0.30	0.50	0.80
ANGLES	±2.5°		

EMI STOP CORP.

EMI STOP

EMISTOP P/N	CUS P/N
QQ-41Q2G	