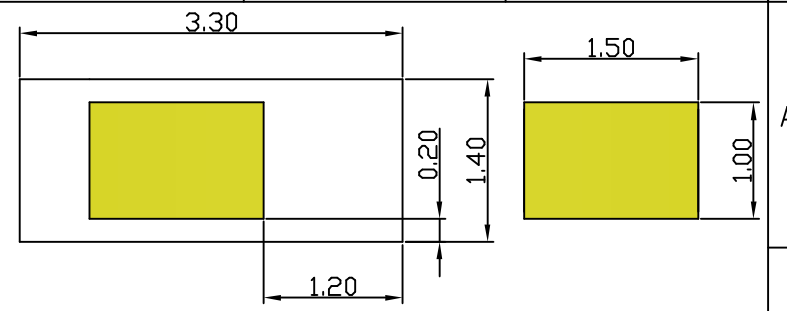
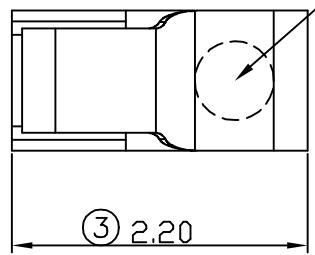
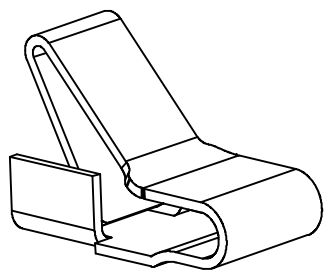
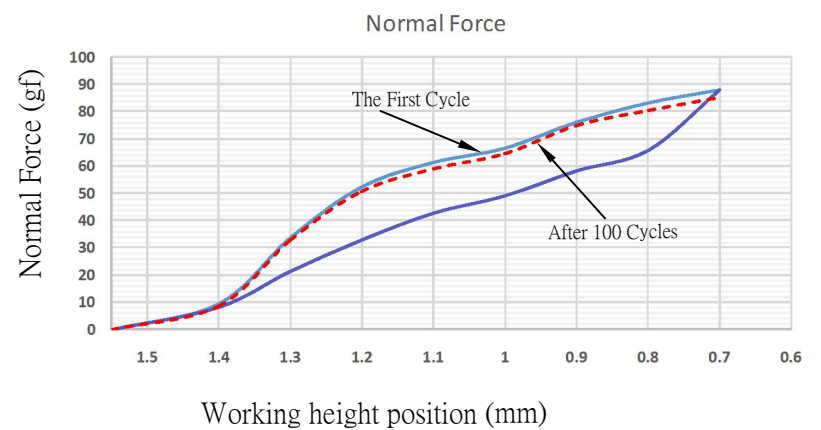
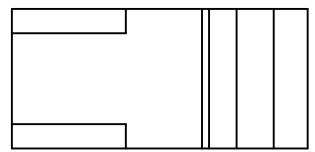
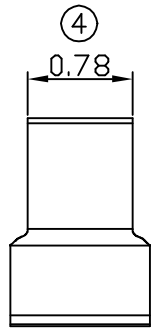
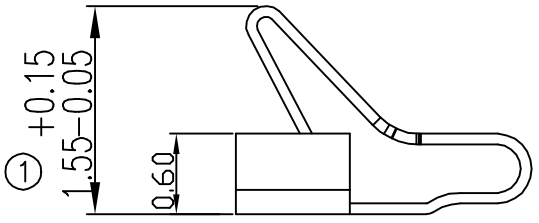
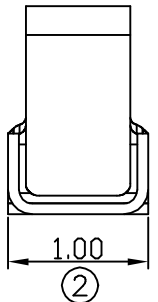




Place Area NOZZLE



RECOMMENDED SOLDERING PCB LAYOUT
TOLERANCE(.XX±0.05)



Note:

1. Material: Titanium copper Thickness 0.08mm
2. Electroplate:
 - Au >1u' on contact area
 - Gold Flash on solder area
 - Nickel underplating over all
3. Electrical Characteristics:
 - 3-1 Current Voltage: 12V
 - 3-2 Current Rate: 3A
 - 3-3 Contact Resistance: Normal Compression < 30mΩ
4. Working Height of Application: 0.70~1.15 mm
5. Spring Force Tolerance is ±20gf
6. Operating Temperature: -20℃~+85℃

00	06/15-'17	Design creation						
REV	Date	Description						
DRAFT	Hardy Hsieh	DATE	06/15-'17	RoHS Compatible				
CHECKER	Justin Wu	DATE	06/15-'17					
APPROVAL	Jacky Lin	DATE	06/15-'17					
		SHEET	1-2	SCALE	Not to scale	UNIT	mm	

TOLERANCE/CLASS			
RANGE(mm)	1	2	3
≤30	±0.10	0.15	0.20
30<- ≤120	±0.15	0.20	0.30
120<- ≤300	±0.20	0.30	0.50
300<	±0.30	0.50	0.80
ANGLES	±2.5°		

EMI STOP CORP.
EMI STOP
EMISTOP QTT-15A2G CUS P/N