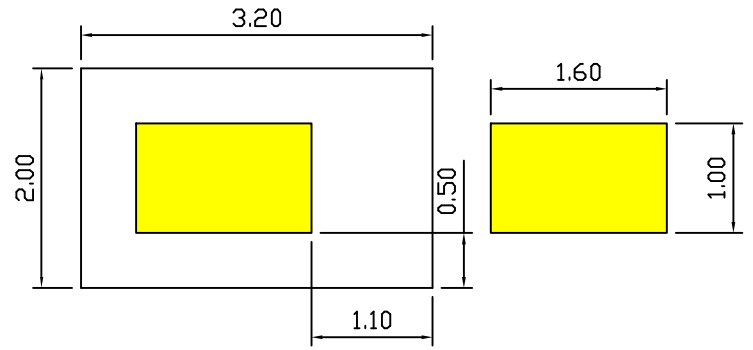
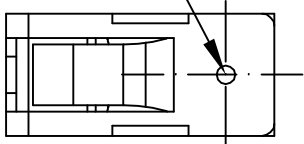


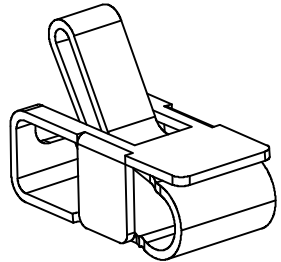
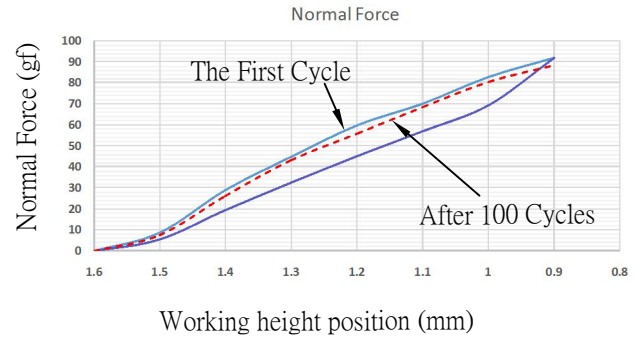
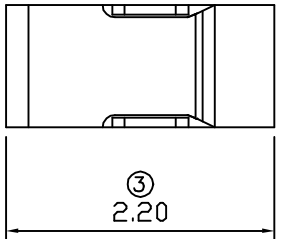
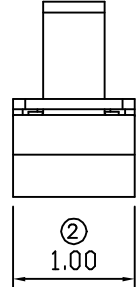
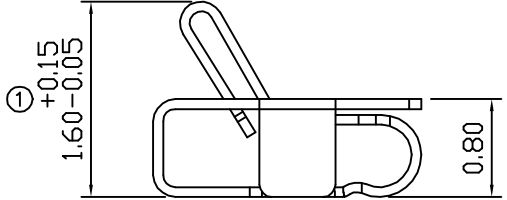
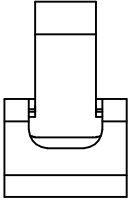
00 10/19-'16



Place Area Nozzle




RECOMMENDED SOLDERING PCB LAYOUT
TOLERANCE(.XX±0.05)



- Note:
1. Material: Stainless Steel Thickness 0.08mm
 2. Electroplate:
 - Gold Flash on contact area
 - Gold Flash on solder area
 - Nickel underplating over all
 3. Electrical Characteristics:
 - 3-1 Current Voltage: 12V
 - 3-2 Current Rate: 3A
 - 3-3 Contact Resistance: Normal Compression <math>< 50\text{m}\Omega</math>
 4. Working Height of Application: 0.90~1.20 mm
 5. Spring Force Tolerance is $\pm 20\text{gf}$
 6. Operating Temperature: $-20^\circ\text{C} \sim +85^\circ\text{C}$

00	10/19-'16	Design creation			
REV	Date	Description			
DRAFT	Hardy Hsieh	DATE	10/19-'16	RoHS Compatible	
CHECKER	Justin Wu	DATE	10/19-'16		
APPROVAL	Jacky Lin	DATE	10/19-'16		
		SCALE	Not to scale	UNIT	mm

TOLERANCE/CLASS			
RANGE(mm)	1	2	3
≤30	±0.10	0.15	0.20
30<- ≤120	±0.15	0.20	0.30
120<- ≤300	±0.20	0.30	0.50
300<	±0.30	0.50	0.80
ANGLES	±2.5°		


EMI STOP CORP.
 EMI STOP
 EMISTOP QTT-16G CUS P/N

1

2

3

4

5

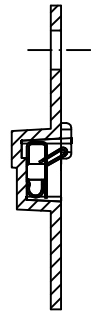
6

7

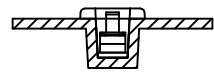
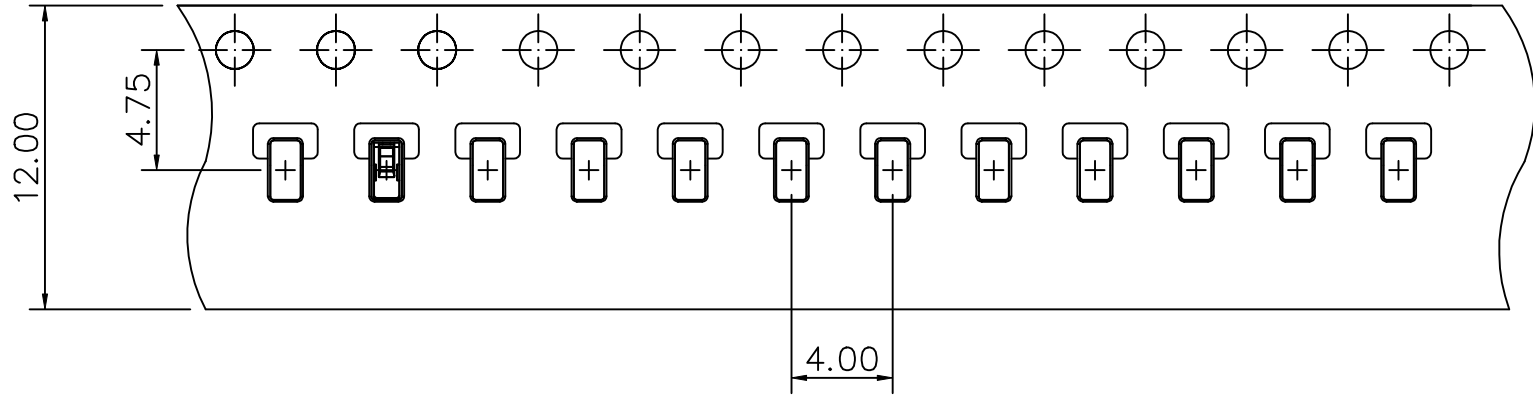
8

A

A



Side View



Front View

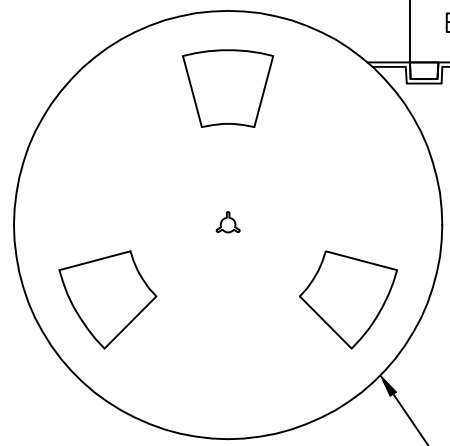
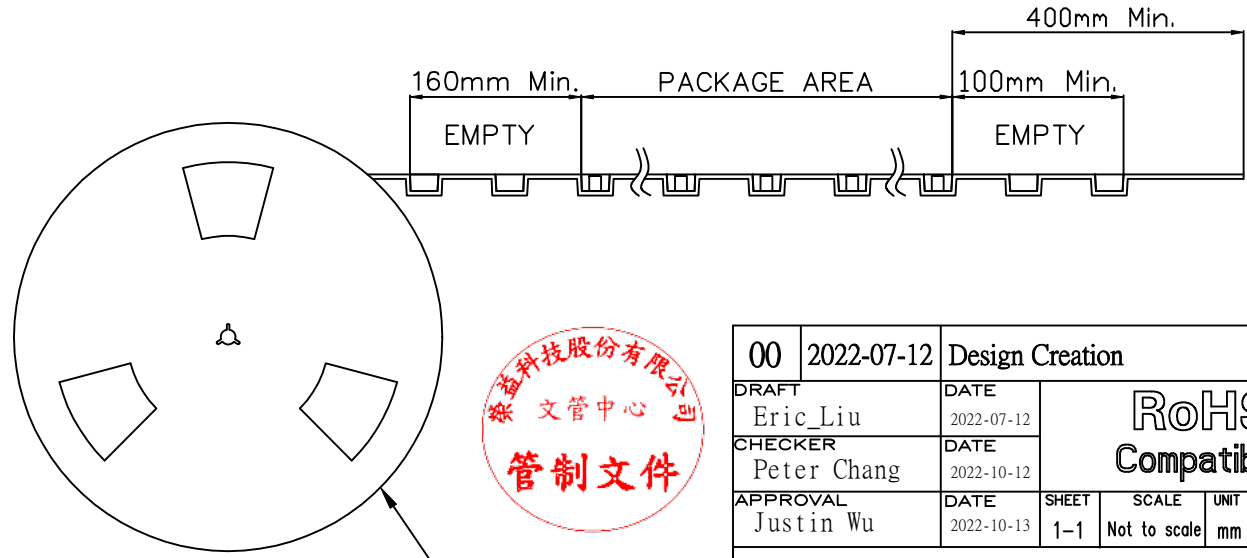
FEEDING DIRECTION

C

C

D

D



REEL(13")

Package Information:
 1.Quantity Per Reel: 7400 PCS
 2.REEL: 13"X 12 mm

00	2022-07-12	Design Creation			
DRAFT	DATE	RoHS Compatible			
Eric_Liu	2022-07-12				
CHECKER	DATE				
Peter Chang	2022-10-12				
APPROVAL	DATE	SHEET	SCALE	UNIT	
Justin Wu	2022-10-13	1-1	Not to scale	mm	
		EMI STOP CORP.			
EMISTOP P/N		CUS P/N			
QTT-16G					

F

F

1

2

3

4

5

6

7

8