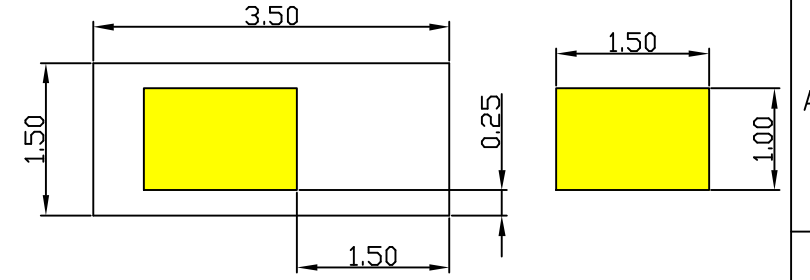
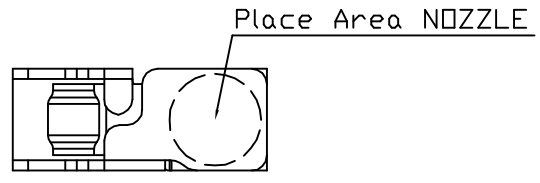
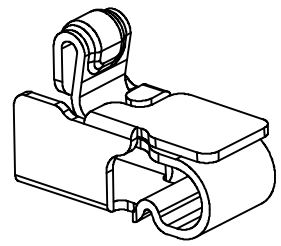
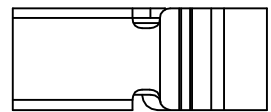
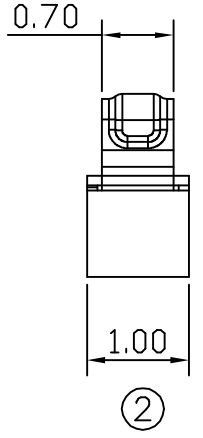
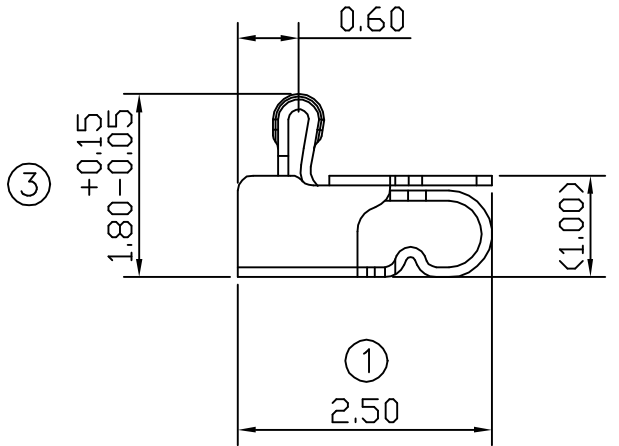
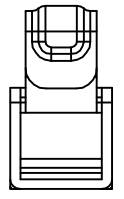
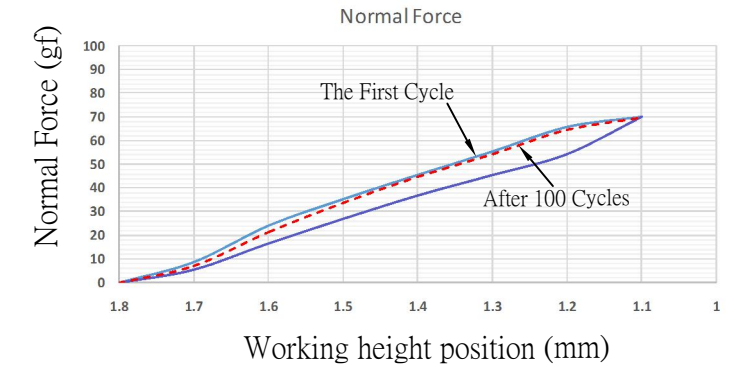


02 09/07-'15



RECOMMENDED SOLDERING PCB LAYOUT
TOLERANCE(.XX±0.05)



- Note:
1. Material: Titanium copper Thickness 0.10mm
 2. Electroplate:
 - Gold Flash on contact area
 - Gold Flash on solder area
 - Nickel underplating over all
 3. Electrical Characteristics:
 - 3-1 Current Voltage: 12V
 - 3-2 Current Rate: 3A
 - 3-3 Contact Resistance: Normal Compression <math>< 30m\Omega</math>
 4. Working Height of Application: 1.10~1.40 mm
 5. Spring Force Tolerance is $\pm 20gf$
 6. Operating Temperature: $-20^{\circ}C \sim +85^{\circ}C$

01	09/07-'15	DESIGN_IMPROVEMENT
00	12/12-'13	Design creation
REV	Date	Description
DRAFT	Duke Chen	DATE 12/12-'13
CHECKER	Gabby Weng	DATE 12/12-'13
APPROVAL	Jacky Lin	DATE 12/12-'13
SHEET	1-2	SCALE Not to scale
UNIT	mm	

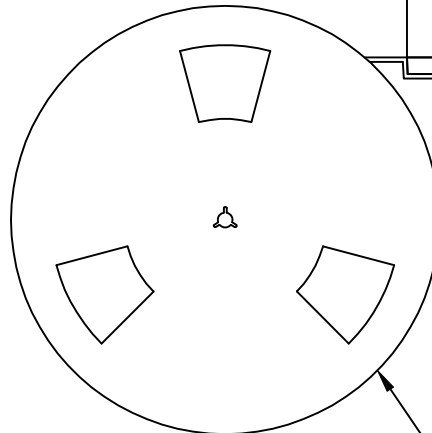
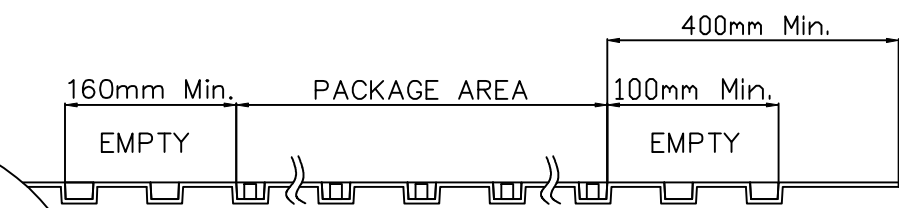
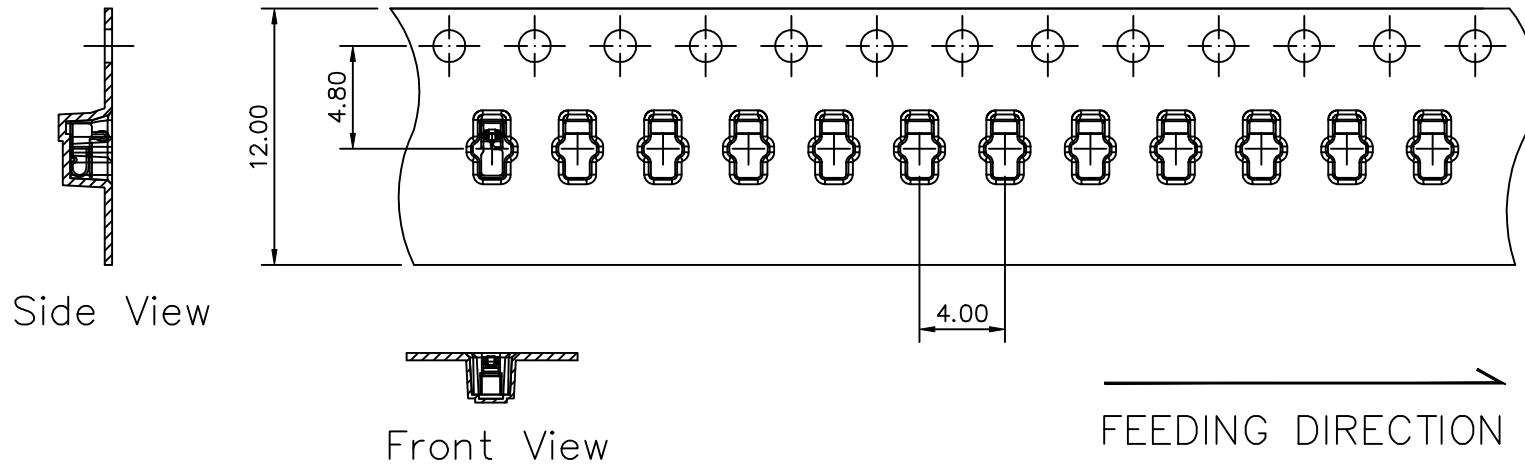
RoHS
Compatible

TOLERANCE/CLASS			
RANGE(mm)	1	2	3
≤30	±0.10	0.15	0.20
30<- ≤120	±0.15	0.20	0.30
120<- ≤300	±0.20	0.30	0.50
300<	±0.30	0.50	0.80
ANGLES	±2.5°		

EMI STOP CORP.

EMISTOP
QTT-18G

CUS P/N



Package Information:
 1.Quantity Per Reel: 7200 PCS
 2.REEL: 13"X 12 mm

REEL(13")

01	2022-05-30	Revise Carrier Type			
DRAFT	Eric_Liu	DATE	2022-06-27		
CHECKER	Peter Chang	DATE	2022-06-27		
APPROVAL	Justin Wu	DATE	SHEET	SCALE	UNIT
		2022-06-30	1-1	Not to scale	mm
RoHS Compatible					
EMI STOP CORP.					
EMI STOP					
EMISTOP P/N				CUS P/N	
QTT-18G					