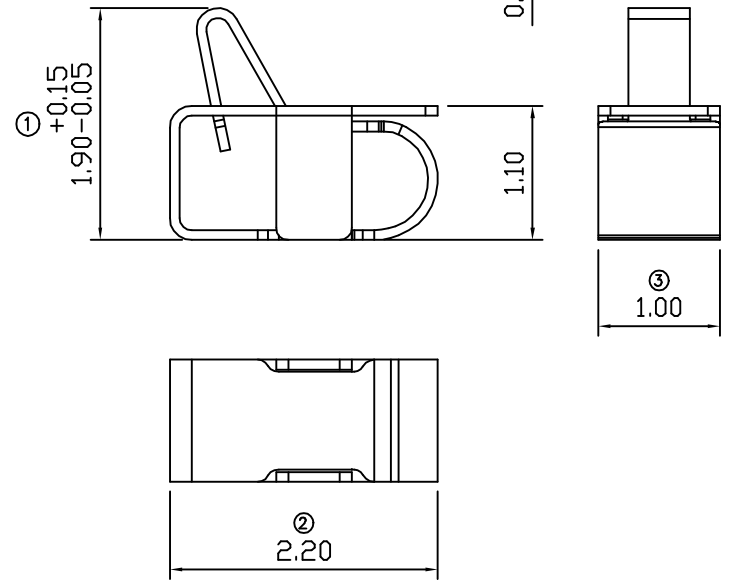
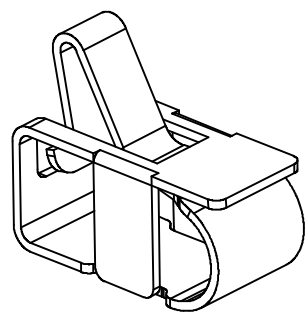
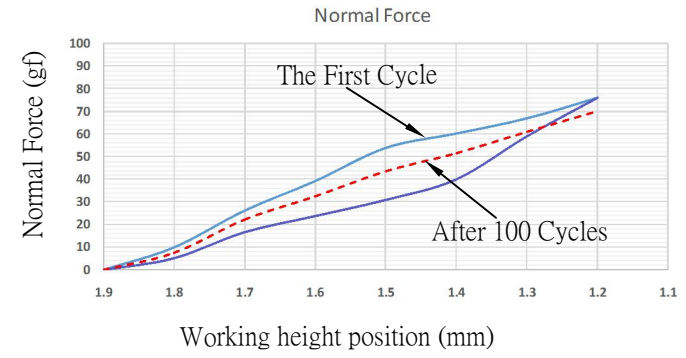


RECOMMENDED SOLDERING PCB LAYOUT
TOLERANCE(.XX±0.05)



- Note:
- Material: Titanium copper Thickness 0.08mm
 - Electroplate:
 - Au>1u" on contact area
 - Gold Flash on solder area
 - Nickel underplating over all
 - Electrical Characteristics:
 - 3-1 Current Voltage: 12V
 - 3-2 Current Rate: 3A
 - 3-3 Contact Resistance: Normal Compression<30mΩ
 - Working Height of Application: 1.20~1.50 mm
 - Spring Force Tolerance is ±20gf
 - Operating Temperature: -20℃~+85℃

00	08/16-'19	Design creation		
REV	Date	Description		
DRAFT	Hardy Hsieh	DATE	08/16-'19	
CHECKER	Justin Wu	DATE	08/16-'19	
APPROVAL	Jacky Lin	DATE	SHEET	SCALE
		08/16-'19	1-2	Not to scale
		UNIT	mm	
		 RoHS Compatible		

TOLERANCE/CLASS			
RANGE(mm)	1	2	3
≤30	±0.10	0.15	0.20
30<- ≤120	±0.15	0.20	0.30
120<- ≤300	±0.20	0.30	0.50
300<	±0.30	0.50	0.80
ANGLES	±2.5°		

EMI STOP CORP.
 EMI STOP
 EMISTOP QTT-19Q1G CUS P/N