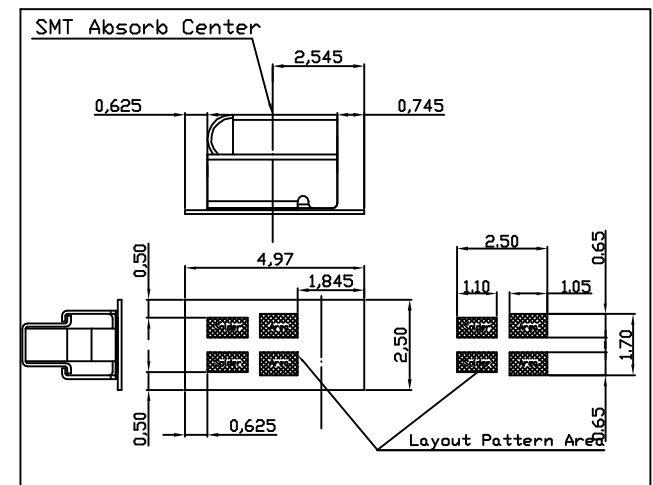
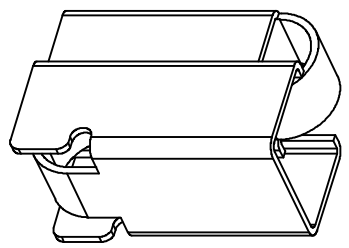
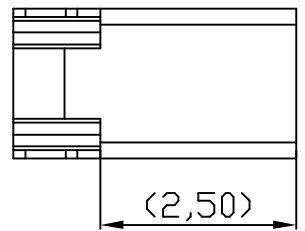
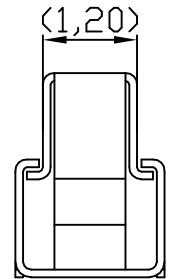
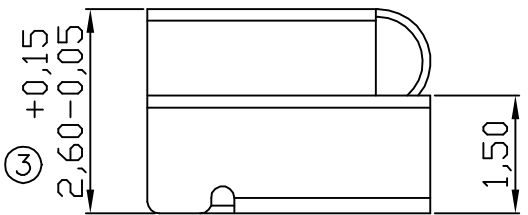
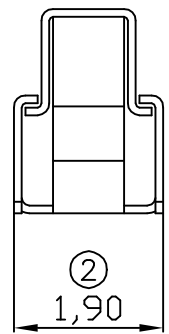
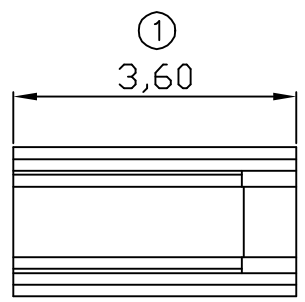
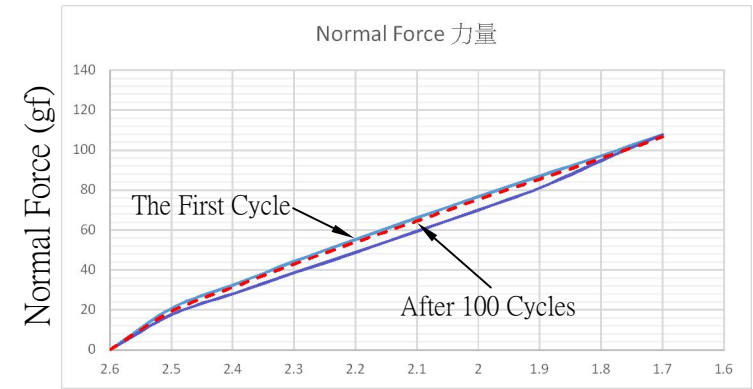


00 09/19-'19



PCB Recommend Layout Pattern



Working height position (mm)

Note:

1. Material: Titanium copper Thickness 0.10mm
2. Electroplate:
 - Au >0.5u" gold plating on contact area
 - Gold Flash on solder area
 - Nickel underplating over all
3. Electrical Characteristics:
 - 3-1 Current Voltage: 12V
 - 3-2 Current Rate: 3A
 - 3-3 Contact Resistance: Normal Compression <30mΩ
4. Working Height of Application: 1.7~2.2mm
5. Spring Force Tolerance is ±20gf
6. Operating Temperature: -20℃~+85℃



TOLERANCE/CLASS			
RANGE(mm)	1	2	3
≤30	+ 0.1	+ 0.15	+ 0.2
30< - ≤120	+ 0.15	+ 0.2	+ 0.3
120< - ≤300	+ 0.2	+ 0.3	+ 0.5
300<	+ 0.3	+ 0.5	+ 0.8
ANGLES	+ 2.5°		

00	09/19-'19	Design creation		
REV	Date	Description		
DRAFT	Hardy Hsieh	DATE	09/19-'19	RoHS Compatible
CHECKER	Justin Wu	DATE	09/19-'19	
APPROVAL	Timothy Chen	DATE	09/19-'19	SHEET 1-2
		SCALE	Not to scale	UNIT mm
EMI STOP CORP.				
EMISTOP ST-26Q1G			CUS P/N	