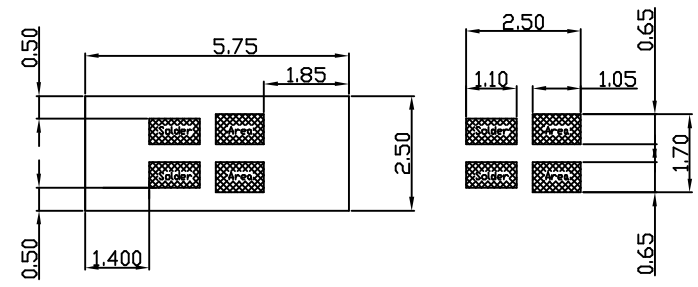
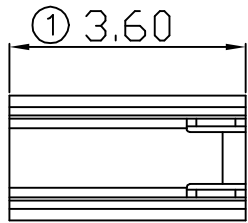
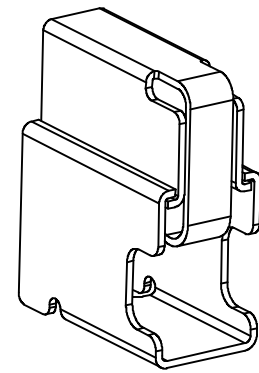
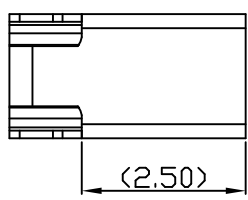
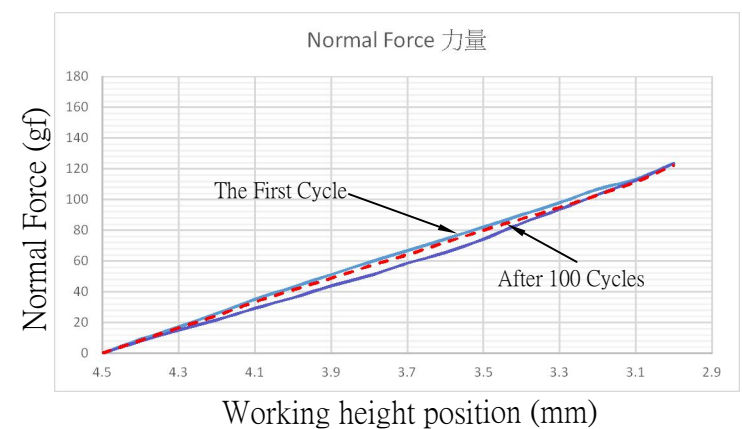
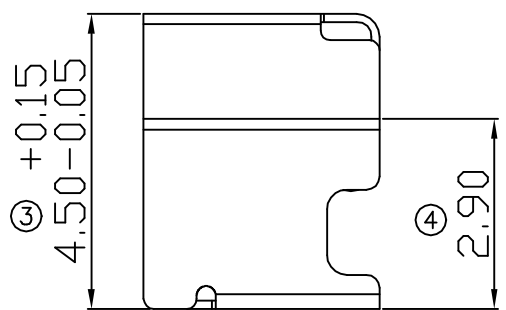
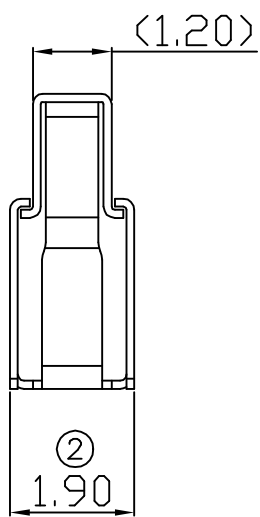


00 03/27-'20



RECOMMENDED SOLDERING PCB LAYOUT

TOLERANCE(.XX±0.05)



Note:

1. Material: Titanium copper Thickness 0.12mm
2. Electroplate:
Gold Flash on contact area
Gold Flash on solder area
Nickel underplating over all
3. Electrical Characteristics:
3-1 Current Voltage: 12V
3-2 Current Rate: 3A
3-3 Contact Resistance: Normal Compression<30mΩ
4. Working Height of Application: 3.0~4.0 mm
5. Spring Force Tolerance is ±20gf
6. Operating Temperature: -20℃~+85℃

00	03/27-'20	Design creation				
REV	Date	Description				
DRAFT	Lydia Tsai	DATE	03/27-'20	RoHS Compatible		
CHECKER	Justin Wu	DATE	03/27-'20			
APPROVAL	Timothy Chen	DATE	03/27-'20			SHEET
		SCALE	Not to scale	UNIT	mm	

TOLERANCE/CLASS			
RANGE(mm)	1	2	3
≤30	+ 0.1	+ 0.15	+ 0.2
30< - ≤120	+ 0.15	+ 0.2	+ 0.3
120< - ≤300	+ 0.2	+ 0.3	+ 0.5
300<	+ 0.3	+ 0.5	+ 0.8
ANGLES	+ 2.5°		

EMI STOP CORP.
EMI STOP
EMISTOP
ST-45Q1G

CUS P/N